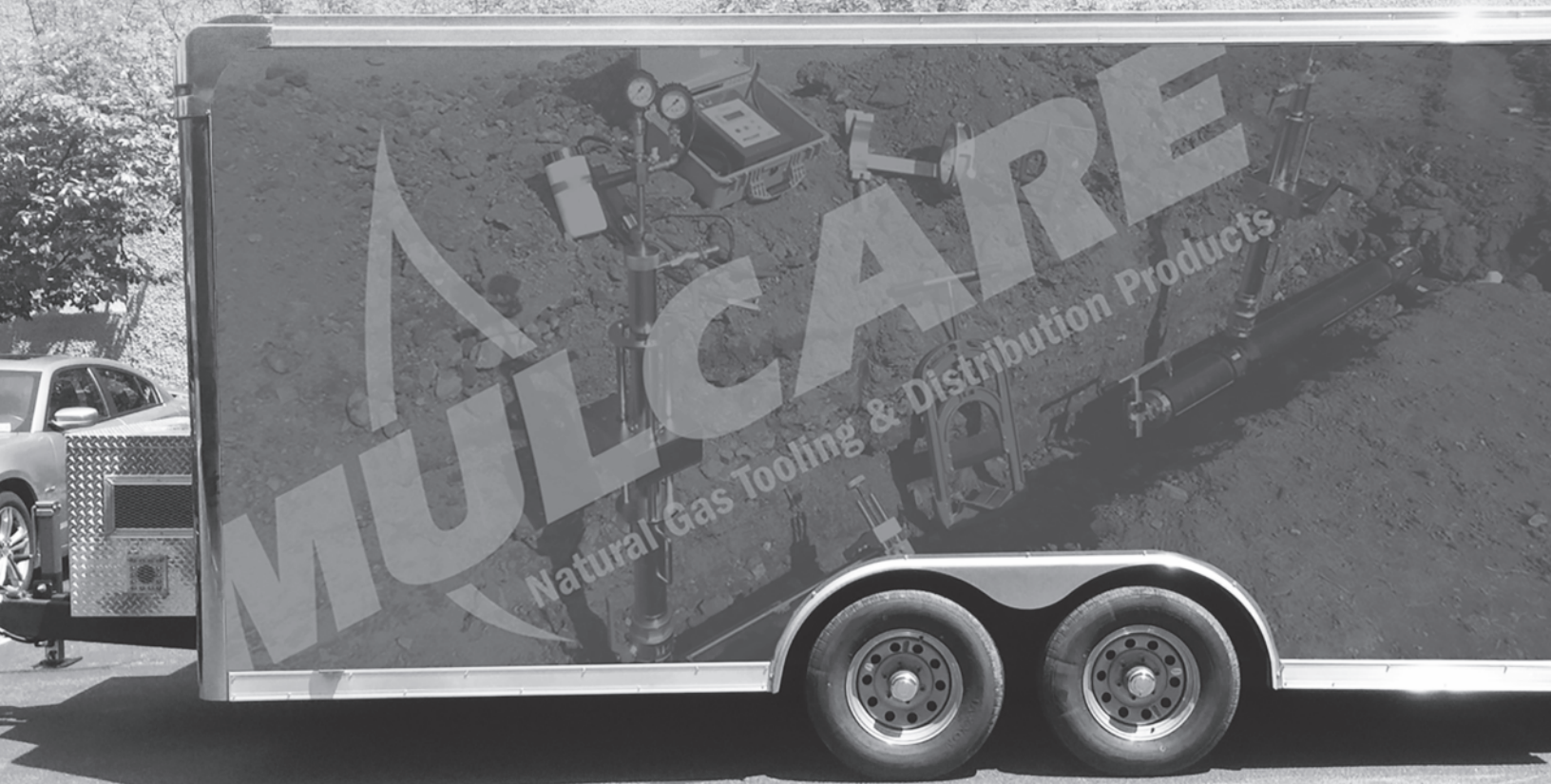




M3

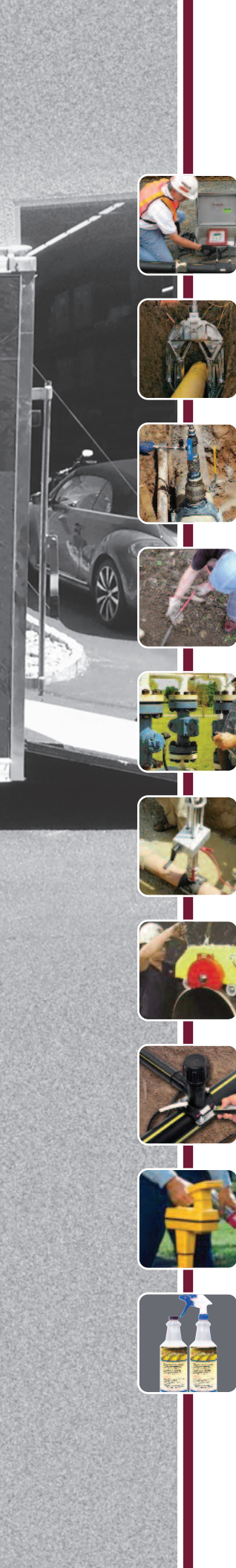


TOUGH

innovative

Reliable





PLASTIC PIPE JOINING4

PLASTIC PIPE SQUEEZE & CUTTING24

GAS MAIN TAPPING34

SERVICE RENEWAL.....38

VALVE TOOLING42

FLOW STOP OFF, BAGS & PLUGS.....46

STEEL & CAST IRON PIPE CUTTING, BEVELING & SQUEEZING52

POLYETHYLENE VALVES & FITTINGS.....58

MARKING, LOCATING & LEAK DETECTION62

SYSTEM PROTECTION66

*Mulcare offers everything you need
for all types of plastic pipe joining.*

PHOENIX ELECTROFUSION PROCESSOR
ITESCRAPE ELECTROFUSION SCRAPERS
ELECTROFUSION SCRAPERS
ALIGNRITE ELECTROFUSION CLAMPS
CHAMFER TOOLS
MECHANICAL JOINING
ALCOHOL WIPES
E-Z PROBE PYROMETER
INFRARED THERMOMETERS
TEMPIL STICKS



MULCARE PHOENIX ELECTROFUSION PROCESSOR

- Scans barcode using conventional contact reader wand or the advanced SMART SCANNER with or without GPS.
- Automatically identify and fuse fittings from any electrofusion fitting manufacturer.
- A battery option is available. The standard 9Ah lead acid pack will allow the Mulcare battery processor to fuse all sizes of standard and high volume tapping tees as well as couplings up to 4" IPS.
- Available in a watertight, suitcase style enclosure providing physical protection and room for storage of cables and other accessories.
- Auto ID and Resistor ID available
- Field calibration ready using **AUTO CAL®** system.
No need to return unit to factory.



SMART SCANNER



BATTERY PROCESSOR

Processor Style	Barcode	9 Ah Battery
Universal	YES	YES
Warranty	1 year Standard (Optional Extended Warranty)	1 year Standard (Optional Extended Warranty)
Made & Serviced in the U.S.	YES	YES
Operating Modes	Barcode, Manual & Auto ID	Barcode, Manual & Auto ID
Size	20.625" x 16.875" x 8.125"	19.125" x 15.5" X 7.5"
Weight	48 lbs (Suitcase Style)	46 lbs
Output Cable Length	12 feet	12 feet
Power Source	AC / Generator / Inverter	9 Ah Lead Acid
Supply Voltage	97 VAC - 150 VAC	120 VAC for charging only
Supply Frequency	47 Hz - 70 Hz	60 Hz for charging only
Supply Waveform	Sine Wave or Square Wave	Sine Wave for charging only
Maximum Fitting Size	Any Fitting	4" Couplers
Output Voltage	8 - 48 volts +/- 2%	8 - 48 volts +/- 2%
Operating Temperature	0 F - 120 F (optionally 0 F - 140 F)	0 F - 120 F (optionally 0 F - 140 F)
Fusion Storage	1000+ fusions	1000+ fusions
Download Port	Serial / USB	Serial / USB
Fitting Adapters Included	4.0 mm / 4.7 mm	4.0 mm / 4.7 mm
Environmental Protection	IP54 Splash Proof	IP54 Splash Proof
Calibration Interval	2 year	2 year



Ask your representative about our tool repair services

Call now to place an order
973-335-4800

MULCARE



SMART SCANNER

- Verify fitting data directly on the display of the scanner.
- Start and stop fusions from the SMART SCANNER – it is as simple as "point and click".
- Optional Integrated GPS for the ultimate in fitting location accuracy.

Model	Part #
SmartScanner	119653-20
SmartScanner GPS	119653-10



BARCODE WAND

- Scan barcodes from any fitting manufacturer into the Mulcare Phoenix Electrofusion Processor.

Model	Part #
Barcode Wand	119653-30



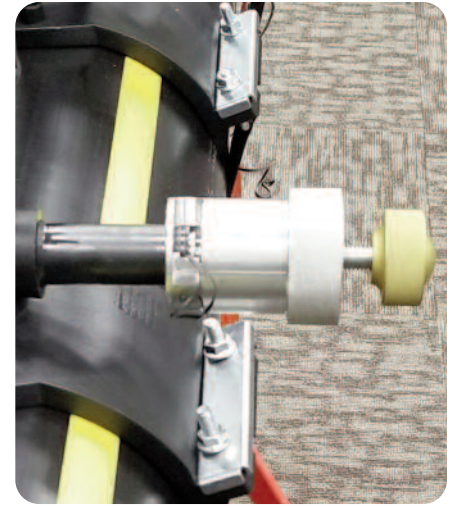
REPLACEMENT TIPS

- Screw in style for Mulcare Phoenix Processor.
- Older styles available. Please Call.

Size	Fittings*	Part #
4.0 mm (White)	Nupi Elofit, Innogaz, Friatec	119645-10
4.7 mm (Black)	Central, MT Deason	119646-10
—	Wrench	121971-10
—	Marinco Adapter	120212-10

Use as a guide only – Always make sure output cables fit snugly.



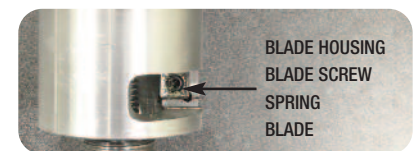
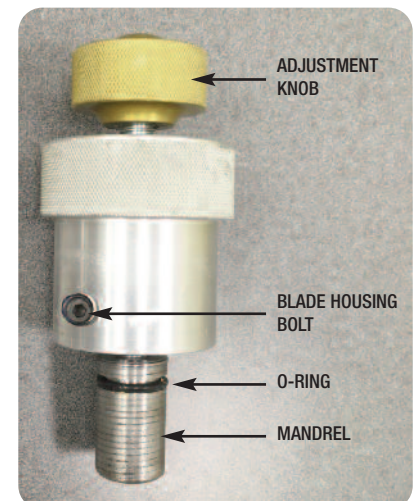


RITESCAPE™ TUBING SCRAPERS

- Machined billet aluminum construction
- Floating blade for consistent shaving depth even on coil or ovaled pipe
- Ideal for pipe prep on couplings and tees.
- 1/2" CTS through 2" IPS

Model	Tubing Size	Part #
RITESCAPE Tubing Scraper	1/2" CTS	123334-10
	3/4" CTS	Coming Soon
	3/4" IPS (SDR 11)	123334-20
	1" CTS (.090-.101)*	123334-30
	1" IPS (SDR 11)	123334-40
	1-1/4" CTS	123334-50
	1-1/4" IPS (SDR 11)	123334-60
	2" IPS (SDR 11)	123334-70

*.121 and .125 wall thickness available by request.



REPLACEMENT PARTS

Tool	Adjustment Knob	Blade	Blade Screw	Blade Housing	Blade Housing Bolt	Blade Housing Spring	O-ring
1/2" CTS Tubing	122129-10	118314-10	121285-10	123834-10	123835-10	123836-10	123837-10
3/4" IPS (SDR 11) Tubing	122129-10	118314-10	121285-10	123838-10	123839-10	123840-10	123841-10
1" CTS (.090-.101) Tubing	122129-10	118314-10	121285-10	123842-10	123843-10	123840-10	123844-10
1" IPS (SDR 11) Tubing	122129-10	118314-10	121285-10	123845-10	123846-10	123840-10	123847-10
1-1/4" CTS Tubing	122129-10	118314-10	121285-10	123848-10	123849-10	123850-10	123851-10
1-1/4" IPS (SDR 11)	122129-10	118314-10	121285-10	123852-10	123853-10	123840-10	123854-10
2" IPS (SDR 11)	122129-10	118314-10	121285-10	123855-10	123856-10	123840-10	123857-10

Call now to place an order
973-335-4800

MULCARE

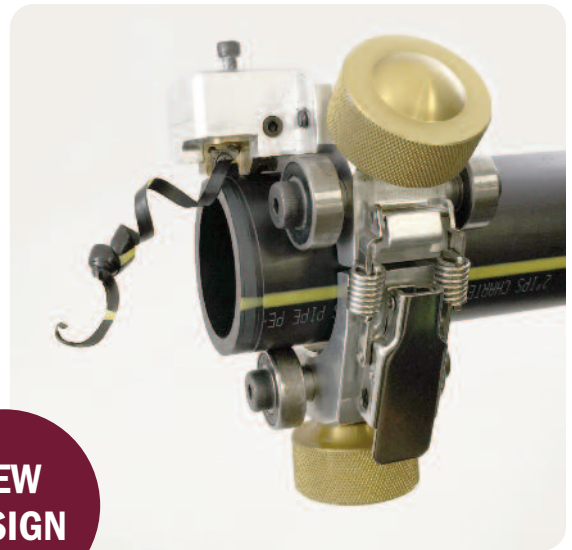


Plastic Pipe Joining

www.mulcare.com



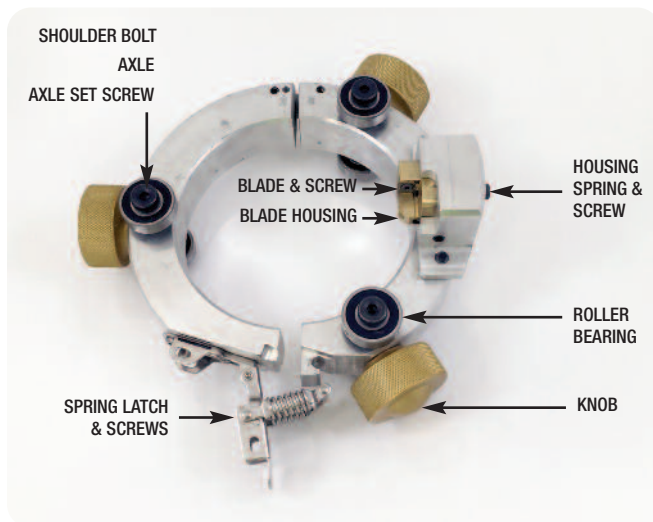
**NEW
DESIGN**



RITESCRAPE™ ROTARY SCRAPERS

- Machined billet aluminum construction
- Floating blade for consistent shaving depth even on coil or ovaled pipe
- Same parts across all sizes
- Smaller profile for use in tight work areas
- 2" through 12" main sizes

REPLACEMENT PARTS



Model	Pipe Size	Part #
RITESCRAPE Rotary Scraper (Includes Bag)	2" IPS	123630-20
	3" IPS	Coming Soon
	4" IPS	123632-20
	6" IPS	123633-20
	8" IPS	123634-20
	12" IPS	Coming Soon

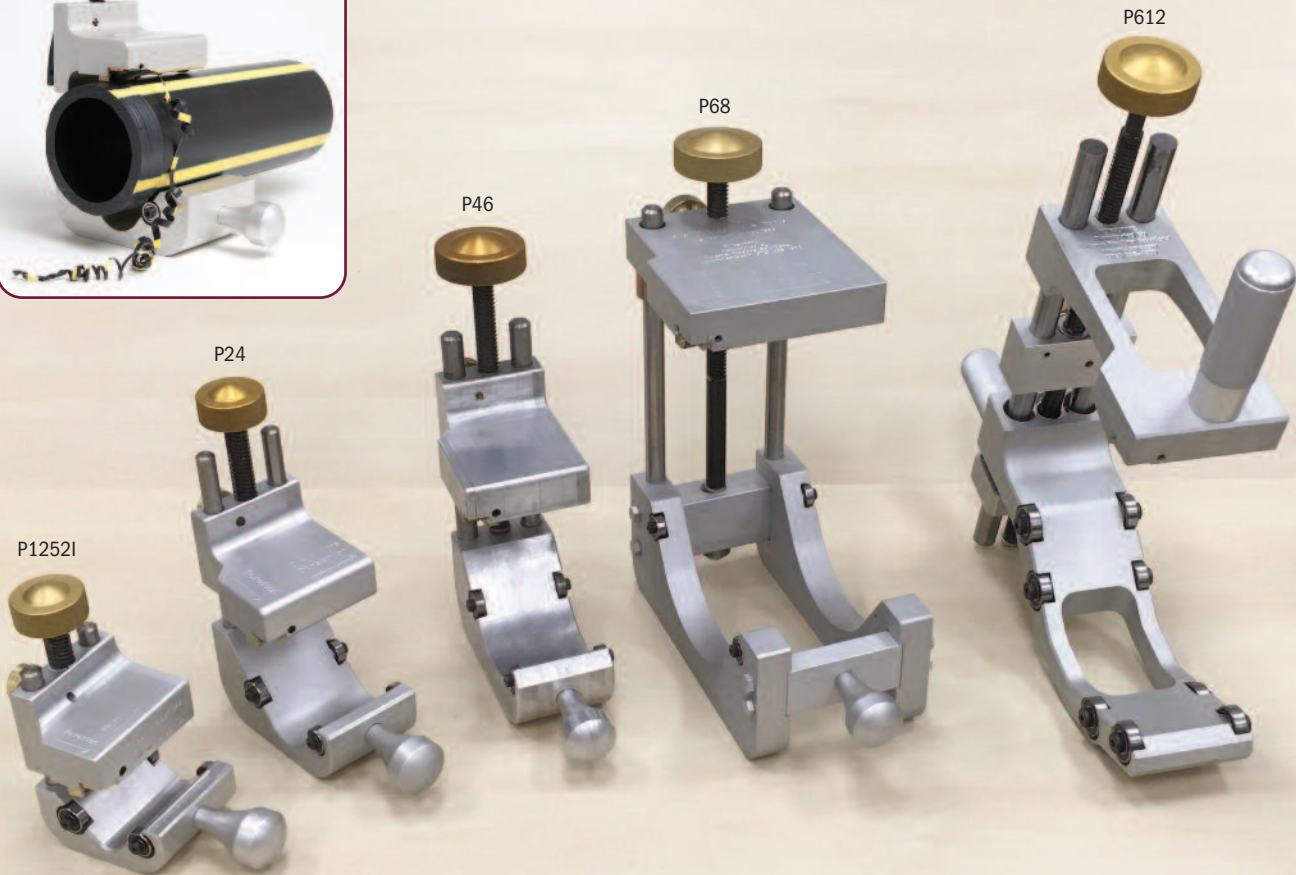
Model	Material Removal Range – Pass 1
2" Rotary	.006" – .010"
4", 6", & 8" Rotary	.008" – .012"

Replacement Parts For All Models	Part #
Knob	122129-10
Roller Bearing	121971-10
Shoulder Bolt	121972-10
Spring Latch & Screws	123858-10
Axel	123859-10
Axel Set Screw	123860-10
Blade	118314-10
Blade Screw	121285-10
Blade Housing	121284-10
Blade Housing Mount	123861-10
Blade Housing Mount Screws	123862-10
Blade Housing Spring	123863-10
Blade Housing Top Screw	123864-10
Hinge & Spring Pins	123865-10
Small Padded Bag (for 2" & 4")	123758-10
Large Padded Bag (for 6" & 8")	123759-10



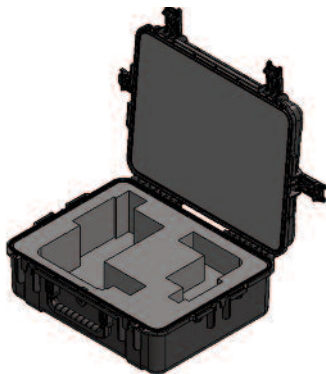
MULCARE

**Call now to place an order
973-335-4800**



ITESCRAPE™ MULTI-SIZE SCRAPERS

- Machined billet aluminum construction
- Floating blade for consistent shaving depth even on coil or ovaled pipe
- Each tool handles multiple pipe sizes.
- 1.25" IPS through 12" main sizes available.



Model	Pipe Size	Part #
ITESCRAPE Multi-Size Scraper	1-1/4" – 2" IPS	118189-10
	2" – 4" IPS	118189-50
	4" – 6" IPS	118189-70
	6" – 8" IPS	118189-30
	6" – 12" IPS	118189-60
Carrying Case for 2" – 4" and 6" – 8" IPS		122261-10

Model	Material Removal Range – Pass 1
1-1/4" – 2" IPS Multi-Size	.006" – .010"
2" – 4" IPS Multi-Size	.008" – .012"
4" – 6" IPS Multi-Size	.008" – .012"
6" – 8" IPS Multi-Size	.008" – .012"
6" – 12" IPS Multi-Size	.008" – .012"

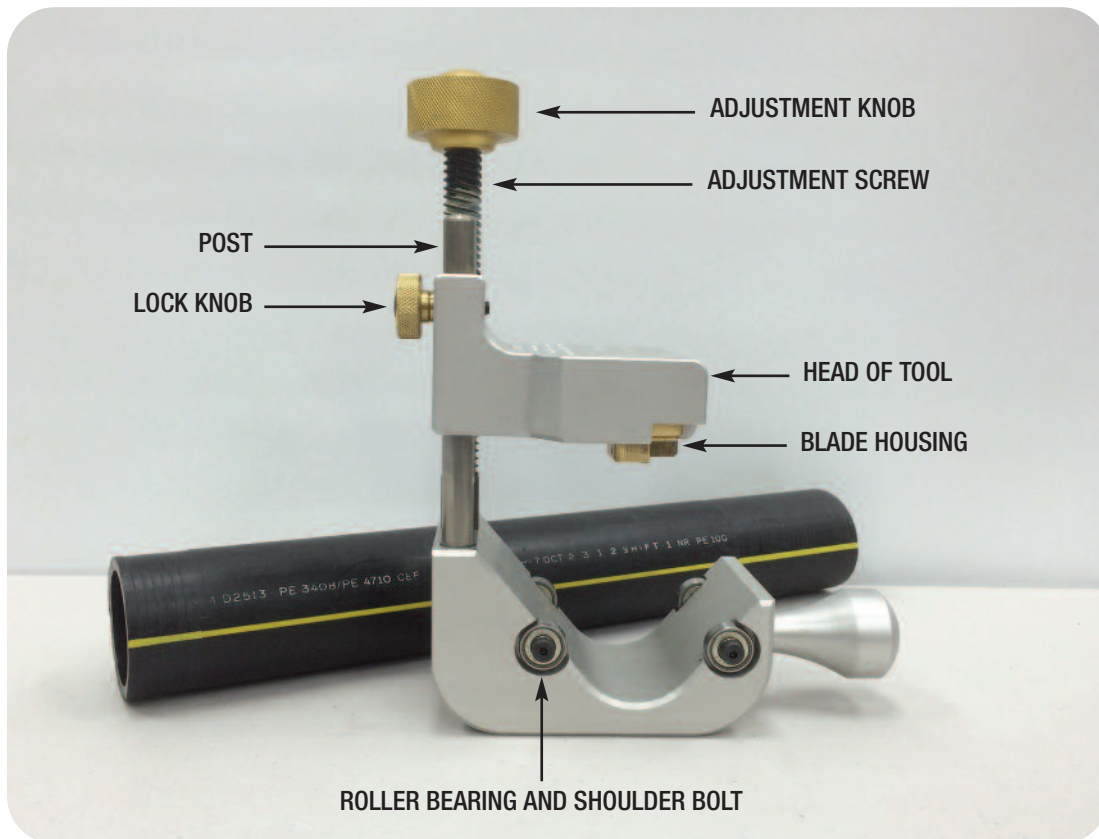
Call now to place an order
973-335-4800

MULCARE



RITESCRAPE™ MULTI-SIZE SCRAPERS REPLACEMENT PARTS

Tool	Adjustment Knob	Adjustment Screw	Lock Knob	Housing	Blade	Housing Spring	Blade Screw	Roller Bearing	Post	Shoulder Bolt	Case
1-1/4" - 2" IPS	122129-10	122126-10	121296-10	121284-10	118314-10	121286-10	121285-10	121289-10	122127-10	121290-10	N/A
2" - 4" IPS	122129-10	122125-10	121296-10	121284-10	118314-10	121286-10	121285-10	121289-10	121970-10	121290-10	122261-10
4" - 6" IPS	122129-10	123085-10	121296-10	121284-10	118314-10	121286-10	121285-10	121289-10	123084-10	121290-10	N/A
6" - 8" IPS	122129-10	120099-10	121296-10	121284-10	118314-10	121286-10	121285-10	121289-10	121421-10	121290-10	122261-10
6" - 12" IPS	122130-10	N/A	120101-10	121284-10	118314-10	121286-10	121285-10	121971-10	N/A	121972-10	N/A



Ask your representative about our tool repair services



MULCARE

Call now to place an order
973-335-4800

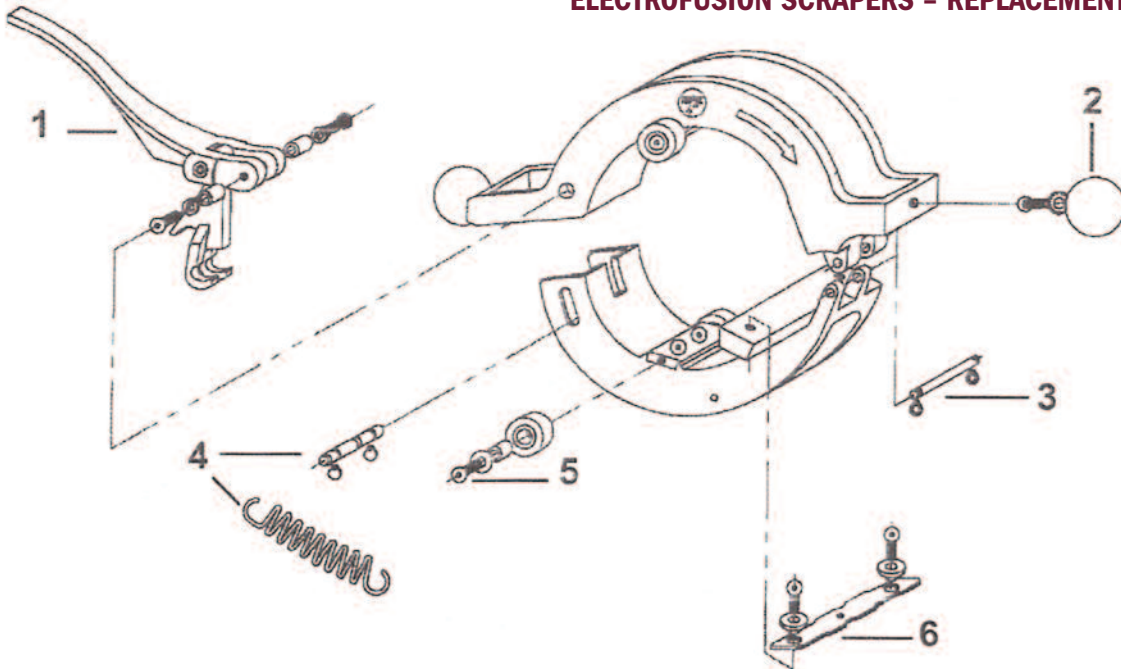


OLD STYLE ELECTROFUSION SCRAPERS

• Rotary Scrapers

Model	Tubing/Pipe Size	Part #
Old Style Rotary Scraper	1-1/4" IPS	11814010
	2" IPS	117802-10
	3" IPS	118097-10
	4" IPS	118002-10
	6" IPS	118043-10
	8" IPS	118874-10
Insert Stiffener	1-1/4 - 2" IPS	118039-10

ELECTROFUSION SCRAPERS - REPLACEMENT PARTS



Ref. No	Description	Pipe Size	Part #
1	Latch Assembly Kit	1-1/4" IPS & 2" IPS	118215-10
		3" IPS & 4" IPS	118883-10
		6" IPS & 8" IPS	118158-10
2	Knob Assembly Kit	1-1/4" IPS & 2" IPS	118049-10
		3" IPS	120927-10
		4" IPS	120928-10
		8" IPS	120929-10
3	Main Hinge Kit	1-1/4" IPS & 4" IPS	113522-10
		6" IPS & 8" IPS	113523-10

Ref. No	Description	Pipe Size	Part #
4	Spring Kit	1-1/4" IPS & 2" IPS	113524-10
		3" IPS & 8" IPS	117918-10
5	Wheel Kit	1-1/4" IPS & 2" IPS	117805-10
		3" IPS & 4" IPS	117799-10
		6" IPS	117800-10
		8" IPS	117801-10
6	Spare Blades-Main Scraper	1-1/4", 2" & 3"	118074-10
		4"	117916-10
		6", 8"	117917-10



Ask your representative about our tool repair services

Call now to place an order
973-335-4800

MULCARE



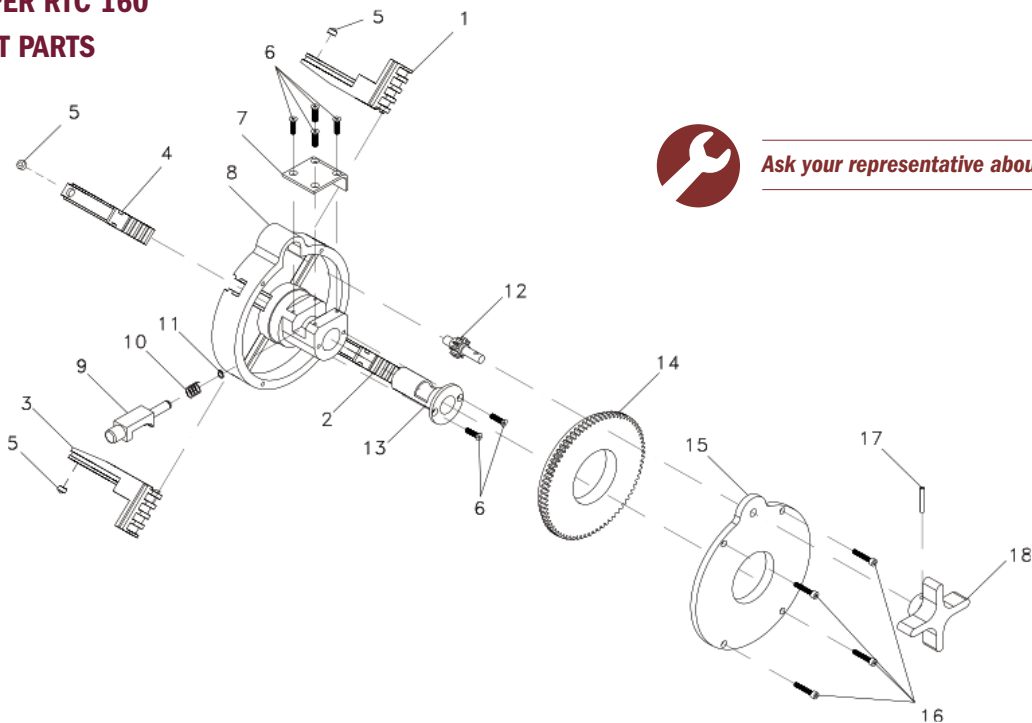
RITMO SCRAPER RTC 160

- Working range external: 2" IPS to 6" IPS.
- Mandrel device to cover all working diameter.
- Rotating arm with a blade supported.
- Device designed to maintain consistent cutting depth.

Model	Tubing/Pipe Size	Part #
RTC 160	2" - 6" IPS	121406-10
Replacement Blade	2" - 6" IPS	121440-10
Carrying Case	For RTC 160	123696-10



RITMO SCRAPER RTC 160 REPLACEMENT PARTS



Ask your representative about our tool repair services

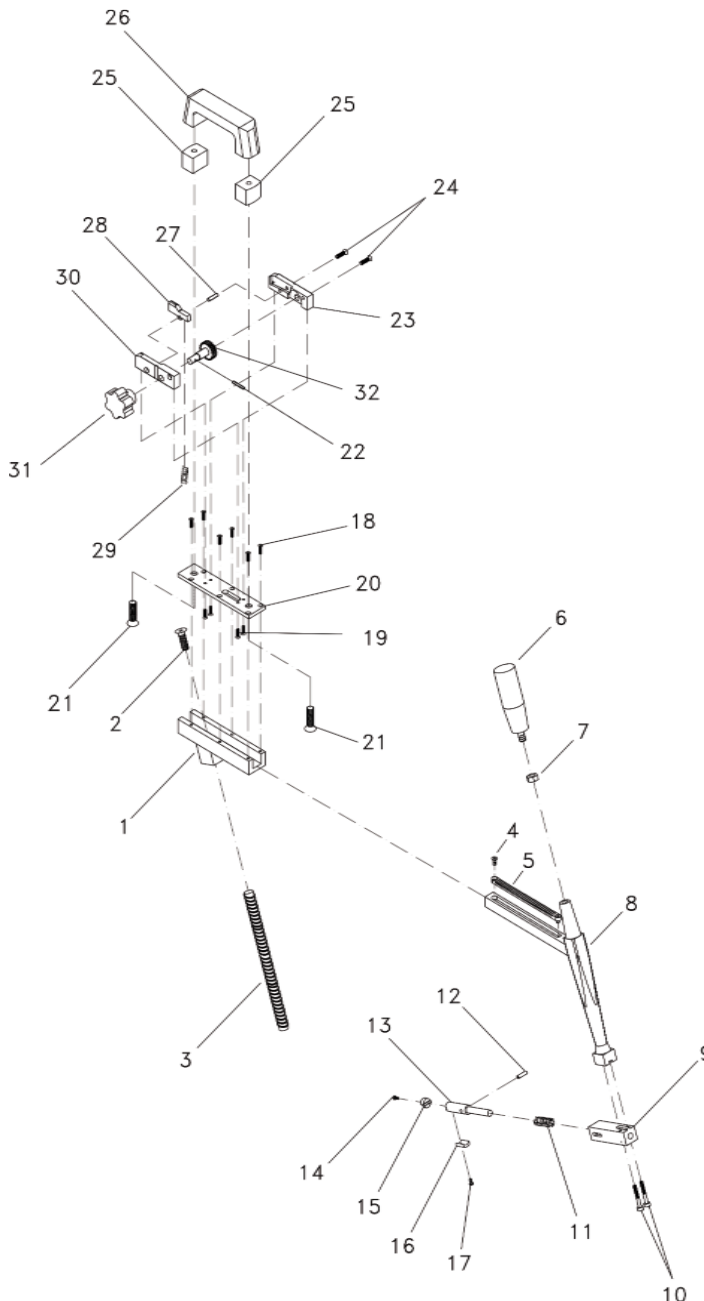
Ref. No.	Code	Description	Part #
1	75329854D	INSERTS (MUST BUY 4)	N/A
2	75329864D	INSERTS (MUST BUY 4)	N/A
3	75329874D	INSERTS (MUST BUY 4)	N/A
4	75329884D	INSERTS (MUST BUY 4)	N/A
5	41800010	POSITIONER HWN208-2208.005	123137-10
6	40240784	SCREW TSPEI 10.9 M3x12 UNI 5933-Zn (*4)	123697-10
7	74499851A	LOCKING PLATE	123698-10
8	71749850	PIPE SCRAPER BASE	123699-10
9	76769851B	BUTTON TPF14 sin	123700-10

Ref. No.	Code	Description	Part #
10	41851160	SPRING De 9x1x19 cod.D11960-B	123701-10
11	41372090	RING 6 UNI 7435-Br	123702-10
12	77579860	WHEEL WITH PIN Z10 m 1.25	123703-10
13	70849850	BEARING D30d14x45.5	121430-10
14	77579850	SERRATED WHEEL Z75 m1.25	123704-10
15	71659860	SCRAPER BASE COVER	123705-10
16	40120772	SCREW TCEI 8.8M3x10 UNI 5931-Zn (*4)	123706-10
17	41410980	ELASTIC PIN d3x18 UNI 6873-Br	121847-10
18	79379850	HAND WHEEL D60 4 LOBES	123707-10





RITMO SCRAPER RTC 160 - REPLACEMENT PARTS



Ref. No.	Code	Description	Part #
1	78159850	SCRAPER ARM GUIDING SUPPORT	123709-10
2	40241374	SCREW TSPEI 10.9 M5x25 UNI 5933-Zn	123710-10
3	79299850	GUIDE SCREW TPF 14x190	123711-10
4	40241004	SCREW TSPEI 10.9 M4x12 UNI 5933-Zn	121595-10
5	71859850	RACK m 0.75x112	123712-10
6	32090090	HANDLE MGE/28x88 M8	121619-10
7	41002082	NUT 6S M8 UNI 5588-Zn	121620-10
8	70839880	MAIN ARM	121846-10
9	78159040	PLATEHOLDER SUPPORT	121442-10
10	40121062	SCREW TCEI 8.8 M4x25 UNI5931-Zn (*2)	121443-10
11	75209020	SPRING d11.5x1.25x28 6 SPIRE	121438-10
12	41421500	SPIROL PIN d4x18 UNI 6875-Br	121437-10
13	76559032A	PLATE HOLDER	121441-10
14	40780502	SCREW TCB 4.8 M2.5x8 UNI 7687-Zn	121433-10
15	76509020	ROUND BLADE d12x7	121440-10
16	76259002A	SPARE SLIDING BLOCK	121439-10
17	40780482	SCREW TCB 4.8 M2.5x6 UNI 7687-Zn	121432-10
18	40240784	SCREW TSPEI 10.9 M3x12 UNI 5933-Zn (*6)	123697-10
19	40241004	SCREW TSPEI 10.9 M4x12 UNI 5933-Zn (*4)	121595-10
20	71659850	SCRAPER ARM SUPPORT COVER	123713-10
21	40241394	SCREW TSPEI 10.9 M5x30 UNI 5933-Zn (*2)	123714-10
22	41410980	ELASTIC PIN d3x18 UNI 6873-Br	121847-10
23	78159870	SERRATED WHEEL SUPPORT (left)	123715-10
24	40241024	SCREW TSPEI 10.9 M4x16 UNI 5933-Zn (*2)	123161-10
25	72239850	HANDLE SPACER	121848-10
26	32120301	HANDLE MT/105-M5	121849-10
27	41431000	PIN Fe 4x16 h8 UNIEN 22338	123163-10
28	76769012A	RELEASING PUSHBUTTON	122742-10
29	41851150	SPRING De 4.5x0.5x31 cod. D11240	123164-10
30	78159860	SERRATED WHEEL SUPPORT (right)	123716-10
31	79379500	HANDWHEEL VB/40 MODIFIED	121845-10
32	76469002A	PINION Z30 m0.75	122167-10



Ask your representative about our tool repair services

Call now to place an order
973-335-4800

MULCARE



Plastic Pipe Joining

www.mulcare.com

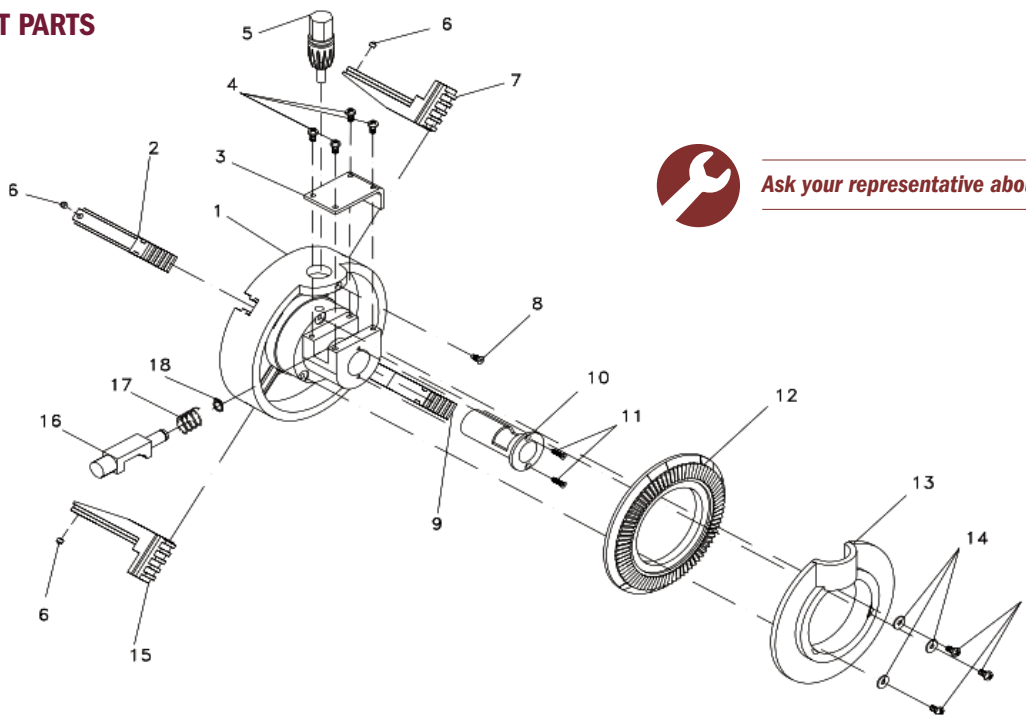
RITMO SCRAPER RTC 315

- Working range external: 3" IPS to 12" IPS.
- Mandrel device to cover all working diameters.
- Rotating arm with a blade supported.
- Device designed to maintain consistent thickness of the continuous chip.

Model	Tubing/Pipe Size	Part #
RTC 315	3" - 12" IPS	121407-10
Carrying Case	For RTC 315	122198-10



REPLACEMENT PARTS



Ask your representative about our tool repair services

Ref. No.	Code	Description	Part #
1	71749010	PIPE SCRAPER BASE	122645-10
2	75329034D	INSERT	121434-10
3	74499000	LOCKING PLATE	123726-10
4	40780972	SCREW TCB 4.8 M4x8 UNI 7687-Zn	123727-10
5	77579022A	CONIC SERRATED WHEEL Z12 M1.5	123728-10
6	41800010	POSITIONER HWN208-2208.005	123137-10
7	75329004D	INSERT	121434-10
8	79299020	SCREW TSPEI M4x10 MODIFIED	123729-10
9	75329014D	INSERT	121434-10
10	70849000	BEARING D36d20x63	121435-10

Ref. No.	Code	Description	Part #
11	40810752	SCREW TSP 4.8 M3x8 UNI 7688-Zn	121436-10
12	77579010	CONIC SERRATED WHEEL Z80 m1.5	123730-10
13	71239000	REAR CASE	123731-10
14	41191041	WASHER Fe 4.3x12 UNI 6593-Zn	123732-10
15	75329024D	INSERT	121434-10
16	76769011B	PUSH BUTTON TPF20 SIN	122574-10
17	75209010	SPRING d15.5X1.1.X27 4 spire	122575-10
18	41372130	RING 10 UNI 7435 Br	122576-10
1-18	81729000	BASE ASSEMBLY (includes all parts)	123733-10



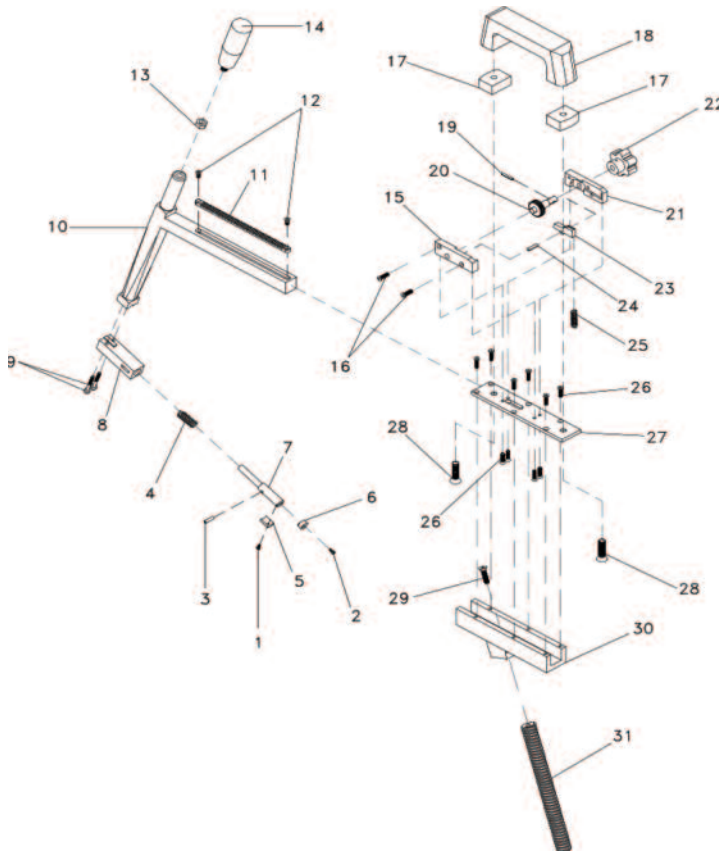
14

MULCARE

Call now to place an order
973-335-4800



RITMO SCRAPER RTC 315 - REPLACEMENT PARTS



RITMO SCRAPER RTC 315 - INSERT EXTENSIONS

Code	Description	Part #
76629049A	Insert Extension 4" - 6" (Need 4)	122330-20
76629059A	Insert Extension 6" - 8.25" (Need 4)	122330-30
76629069A	Insert Extension 8.25" - 10.24" (Need 4)	122330-40
76629079A	Insert Extension 10" - 12" (Need 4)	122330-10

Ref. No.	Code	Description	Part #
1	40780482	SCREW TCB 4.8 M2.5x6 UNI 7687-Zn	121432-10
2	40780502	SCREW TCB 4.8 M2.5x8 UNI 7687-Zn	121433-10
3	41421500	SPIROL PIN d4x18UNI 6875-Br	121437-10
4	75209020	SPRING d11.5x1.25x28 6 SPIRE	121438-10
5	76259002A	SPARE SLIDING BLOCK	121439-10
6	76509020	ROUND BLADE d12x7	121440-10
7	76559032A	PLATEHOLDER	121441-10
8	78159040	PLATEHOLDER SUPPORT	121442-10
9	40121062	SCREW TCEI 8.8 M4x25 UNI 5931-Zn	121443-10
10	70839040	PRINCIPAL ARM	121462-10
11	71859000	RACK m0.75x174	121621-10
12	40810752	SCREW TSP 4.8 M3x8 UNI7688-Zn	121436-10
13	41002082	NUT 6S M8 UNI 5588-Zn	121620-10
14	32090090	HANDLE MGE/28x88 M8	121619-10
1-14	80839000	SCRAPER ARM ASSEMBLY (Items 1-14)	121501-10
15	78159030	SERRATED WHEEL SUPPORT SX	123160-10
16	40241024	SCREW TSPEI 10.9 M4x16 UNI 5933-Zn	123161-10
17	72239010	HANDLE SPACER	121843-10
18	32120200	HANDLE BRASS SLEEVES MS/132-M8	121844-10
19	41410980	ELASTIC PIN d3x18 UNI 6873-Br	121847-10
20	76469002A	PINION Z30 m0.75	122167-10
21	78159020	SERRATED WHEEL SUPPORT DX	123162-10
22	79379500	HANDWHEEL VB/40 MODIFIED	121845-10
23	76769012A	RELEASING BUTTON	122742-10
24	41431000	PIN Fe 4x16 h8 UNIEN 223338	123163-10
25	41851150	SPRING De 4.5x0.5x31 cod. D11240	123164-10
15-25	81659000	COVER ARM SUPPORT GROUP (Items 15-25)	121502-10
26	40241004	SCREW TSPEI 10.9 M4x12 UNI 5933-Zn	121595-10
27	71659000	ARM SUPPORT COVER	123165-10
28	40242394	SCREW TSPEI 10.9 M8x30 UNI 5933-Zn	122250-10
29	40241684	SCREW TSPEI 10.9 M6x25 UNI 5933-Zn	122410-10
30	78159050	ARM GUIDE SUPPORT	122411-10
31	79299030	SCREW TPF 20x3x245	122412-10
26-31	88179035	ARM SUPPORT GROUP (Items 16-31)	121503-10



Ask your representative about our tool repair services

Call now to place an order
973-335-4800

MULCARE



ALIGNRITE™ STANDARD ELECTROFUSION CLAMPS

- High quality billet aluminum construction
- Liners available for multiple size configurations

Model	Tubing/Pipe Size	Part #
ALIGNRITE Adjustable Clamp	2" IPS	123498-10
Liner Set	1.25" IPS	123499-10
ALIGNRITE Straight Clamp	4"	123875-10
Liner Set	1.25" IPS	123499-10
Liner Set	2"	123877-10
Liner Set	3"	123878-10
ALIGNRITE Straight Clamp	8"	123876-10
Liner Set	6"	123879-10
ALIGNRITE Hoop Style Straight Clamp	12"	122288-10

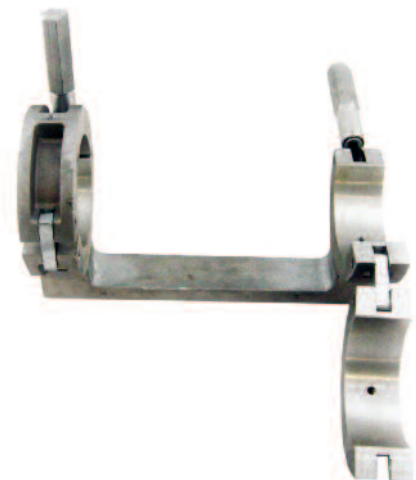
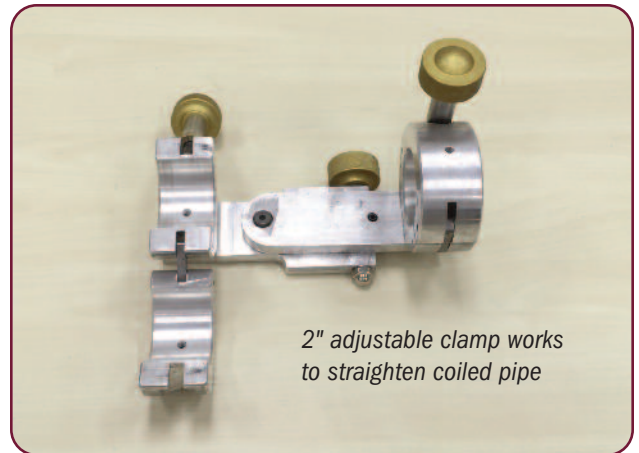
REPLACEMENT PARTS

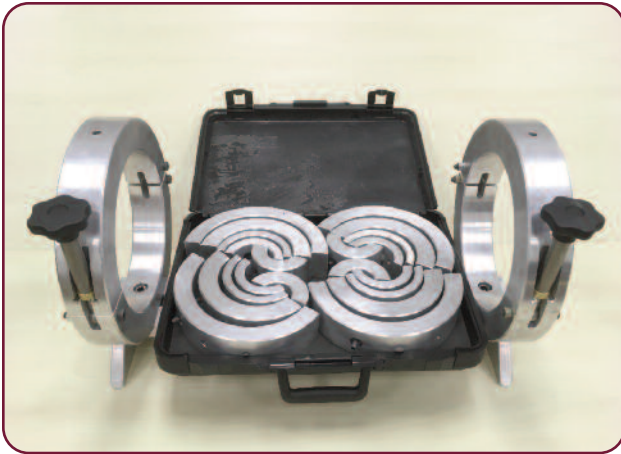
Replacement Part	2"	6"	8"	12"
Handle	Please call			

ELECTROFUSION CLAMP PARTS

- OEM fit parts for cast aluminum style clamps

Replacement Part	2"	6"	8"
Adjustment Knob	Please call		
Handle Kit	Please call		
Ring & Handle Kit	N/A	N/A	123311-10

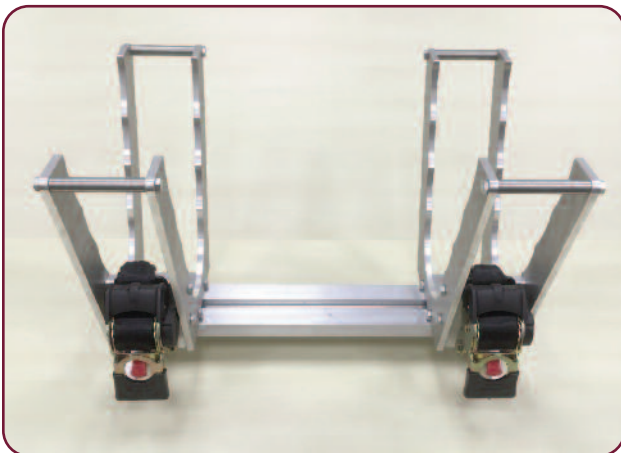




ALIGNRITE™ SPECIALTY ELECTROFUSION CLAMP

- One system for aligning pipe sizes 1.25" – 6"
- Comes with liners, case and allen key

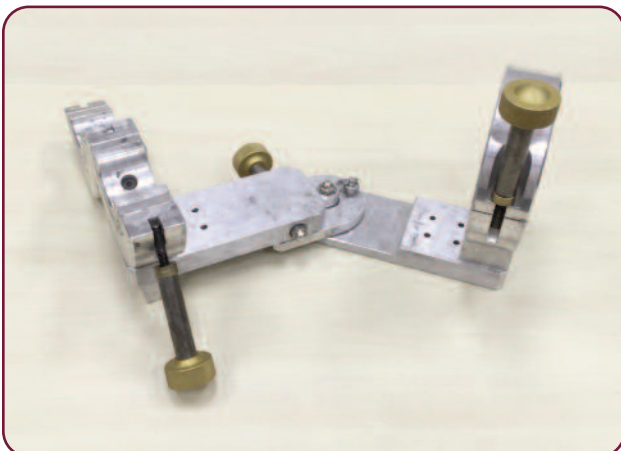
Model	Tubing/Pipe Size	Part #
ALIGNRITE Alignment Clamp	1.25" – 6"	123197-10
	4" – 8"	Coming Soon



ALIGNRITE™ V-STYLE ELECTROFUSION CLAMP

- One tool for aligning 6" – 12" pipe
- Quick release ratchet straps used to secure pipe

Model	Tubing/Pipe Size	Part #
ALIGNRITE V-Style Clamp	6" – 12"	122214-10



ALIGNRITE™ ARTICULATING ELECTROFUSION CLAMP

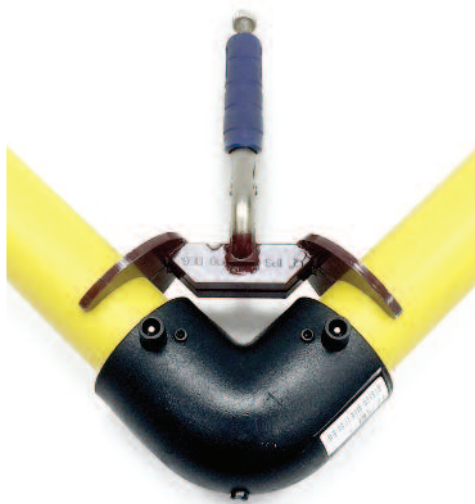
- Articulating arms with fixed positions at straight, 45° & 90°
- 2" & 3" Liners Included

Model	Tubing/Pipe Size	Part #
ALIGNRITE Articulating Clamp	2" – 4"	123174-10



ALIGNRITE™ VISE GRIP ELECTROFUSION CLAMPS

- Sizes 1/2" - 2" IPS available
- High-quality Irwin vise grips with rubberized handles
- Sizes clearly etched on clamps



Model	Tubing/Pipe Size	Part #
ALIGNRITE Vise Grip Clamp	1/2" CTS	122051-10
	3/4" IPS	122051-20
	1" CTS	122051-30
	1" IPS	122051-40
	1.25" CTS	122051-130
	1.25" IPS	122051-50
	1.5" IPS	122051-250
	2" IPS	122051-60
	2" IPS 90°	122296-10
	2" IPS x 1" CTS	122051-80
	1.25" IPS x 1" IPS	122051-270
	1.25" IPS x 1/2" CTS	122051-240
	1.25" CTS x 1" IPS	122051-260
	1.25 CTS x 1" CTS	122051-90
	1" IPS x 1" CTS	122051-70
	1" CTS x 1/2" CTS	122051-180

Specialty sizes available by request.



Nutcracker

V-Tool



Adapter Jaws

JM EAGLE METFIT® PRESS

- Effectively joins MetFit brand fittings.
- Nutcracker - dedicated 1/2" CTS tool.
- V-Tool - 1/2" CTS to 1-1/4" CTS with proper jaws.

Model	Tubing/Pipe Size	Part #
Nutcracker	1/2" CTS	100307-10
V-Tool	1/2" - 1.25" CTS	100310-10
Adapter Jaws	1/2" CTS	100312-10
Adapter Jaws	1/2" IPS - 3/4" CTS	100313-10
Adapter Jaws	3/4" IPS	100314-10
Adapter Jaws	1" CTS	100315-10
Adapter Jaws	1" IPS - 1.25" CTS	100316-10
Replacement Pins	Set of 2	100319-10



JM EAGLE METFIT® SERIES 200 HYDRAULIC SYSTEM

Model	Tubing/Pipe Size	Part #
Series 200 Tool	Includes 2" liners	100308-10
Series 200 System	Includes tool, pump, hose, 1.25" and 2" IPS liners	119632-10
Adapter Jaws	2"	100318-10
Adapter Jaws	1.5"	120188-10
Adapter Jaws	1.25"	100317-10
Relief Valve	For Series 200	119532-10



Ask your representative about our tool repair services



LYALL LYCOFIT® QUICK RATCHET PRESS

- **Quick Ratchet Press (QRP-100, QRP-125)** – lightweight, durable, single ratchet field assembly tools that install all LYCOFIT® couplings from 1/2" CTS through 1.25" IPS.
- **Dual Quick Ratchet Press (QRP-200)** – Designed for manual installations, the dual ratchet design makes it simple to install on medium to large sized piping systems. Installs all LYCOFIT® couplings from 1/2" CTS through 2" IPS.

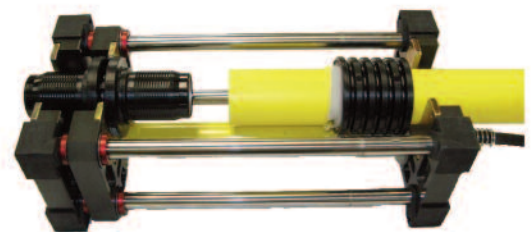
Model	Tubing/Pipe Size	Part #
QRP-100	1/2" CTS – 1" IPS	113589-10
QRP-125	1/2" CTS – 1.25" CTS	113590-10
QRP-200	1/2" CTS – 2" IPS	113591-10



LYALL LYCO® HYDRAULIC PRESS

- **Lycos Hydraulic Press (LHP-200)** – The Lyco Hydraulic Press (LHP -200) is used for joining 1-1/4" IPS, 1-1/2" IPS, and 2" IPS sizes of medium or high density polyethylene gas pipe, utilizing LYCOFIT® Mechanical Fittings. This hydraulic tool is capable of installing standard couplings, end-caps, 90° elbows, 3-way tees, repair couplings, and many combinations of reducing fittings.

Model	Description	Part #
LHP-200-KIT-03	Hydraulic Press w/ P-133 Hand Pump, Hose, Clamps, and Carrying Case	Please Call
LPC-200-SET	2" IPS Clamp Set for LHP200: Includes Two Clamps & One Alignment Plate	Please Call
APJ080-1	Stand 1-1/4" IPS Clamp Set	Please Call
AHP200	Enerpac P-142 Hand Pump w/ fittings for LHP200	Please Call
AHP133	Enerpac P133 Air Over Hydraulic Pump w/ fittings for LHP200	Please Call
LF-BOXLHP	Carrying Case for LHP Kits	Please Call



P-133



P-142





ELSTER PERFECTION CHAMFER TOOL 2.0

- Provides consistent quality "bevel" to polyethylene pipe required to install Elster Perfection Permasert Mechanical Coupling.

Model	Tubing/Pipe Size	Part #
Elster Perfection Chamfer Tool	1/2" CTS	123607-10
	1/2" IPS	123614-10
	3/4" CTS	123615-10
	3/4" IPS	123616-10
	1" CTS	123608-10
	1" IPS	123609-10
	1.25" CTS	123617-10
	1.25" IPS	123618-10
	1.5" IPS	123619-10
	2" IPS	123620-10



CONTINENTAL CHAMFER TOOL

- Effectively chamfers Continental ID style Con-Stab fittings.
- Depth gauge with o-ring provides means to measure proper stab depth.

Model	Quantity	Part #
Continental Chamfer Tool	1/2" CTS	118731-10
	1" CTS	118733-10
	3/4" IPS	118734-10
	1.25" IPS	115370-10
	1.5" IPS	115395-10
	2" IPS	115371-10

ESSENTRA® ALCOHOL WIPES

- Pre-saturated wipes.
- Free of additives.
- Very low levels of sodium and other ions.
- Class 100/10 compatible wipe.
- Resealable container reduces contaminant exposure.



Model	Quantity / Size	Part #
Packets (box)	60 (6" x 8.5" sheet)	114132-10
Canister	100 (6" x 8.5" sheet)	114132-20



TEMPIL STICKS

- Temperature indicating wax melts at designated temperature for easy visual inspection.
- Results are +/- 1% of rated temperature.
- Always in calibration.
- Available in over 100 temperature ratings.

Model	Temp Rating	Part #
Temperature Indicating Crayon	450° F	121678-10
	475° F	121678-20
	525° F	121678-30
	400° F	121678-40
	500° F	121678-50



EDL E-Z PROBE COMPACT PYROMETER

- Compact calibratable pyrometer offers accuracy and durability at an economical price.
- Input jacks at top & bottom give operator complete versatility.
- Magnetic backing for hands-free use.

Model	Description	Part #
EZK-C Kit	Includes EZK-C, Straight Surface Sensor & Case	123871-10
E-Z Probe EZK-C	-30° - 1800° F	116398-10
Surface Sensor	Straight	116688-10
Surface Sensor	45°	122656-10
Carrying Case	With Foam Inserts	118025-10



DWYER INFRARED THERMOMETERS

- Infrared technology for precise, non-contact temperature measurement. Non-calibratable.
- Measure the temperature of most surfaces without any external calculations.
- Can display maximum, minimum, differential and average temperature measurements.

Model	Description	Part #
Dwyer IR3	76° - 932° F. +/- 2% Accuracy. Emissivity Fixed	118572-10
Dwyer IR4	76° - 1400° F. +/- 1% Accuracy. Emissivity Adjustable	118995-10





*Mulcare Electrofusion Processors
final inspection before delivery.*

Located on Page 5

Our inside and outside sales representatives have the knowledge and experience to make sure you have the right tool for the right job.

SQUEEZE-OFF TOOLS

GROUNDING RODS

TOPSIDE CLAMPS

TOP REACH CLAMPS

SHEARS

CUTTERS



MUSTANG GLS 26

- Top-side operation for keyhole applications.
- Mid-range squeeze tool.
- Direct dial squeeze control.
- Heavy duty frame.
- Includes grounding rod.

Model	Tubing/Pipe Size	Part #
GLS 26	1/2" CTS - 2" IPS	121545-10



MUSTANG DBS 10A

- Service size squeeze tool.
- Single size specific.
- Open frame design.

Model	Tubing/Pipe Size	Part #
DBS 10A	1/2" CTS - 1" IPS	Please call
Customer Must Specify One Pipe Size and SDR Per Unit		

Grounding rods are recommended for use during all squeeze operations. Please see page 28 to order.



MUSTANG DBS 20C

- Mid-range squeeze tool.
- Accommodates two pipe sizes.
- Heavy duty frame.

Model	Tubing/Pipe Size	Part #
DBS 20C	1/2" CTS - 2" IPS	Please call
Customer Must Specify Two Pipe Sizes and SDR's Per Unit		

Grounding rods are recommended for use during all squeeze operations. Please see page 28 to order.



Ask your representative about our tool repair services



MUSTANG DBS 24C

- Mid-range squeeze tool.
- Accommodates four pipe sizes.
- Heavy duty frame.

Model	Tubing/Pipe Size	Part #
DBS 24C	1/2" CTS - 2" IPS	Please call
Customer Must Specify Four Pipe Sizes and SDR's Per Unit		



MUSTANG DBS 44C

- Mid-range squeeze tool.
- Accommodates four pipe sizes.
- Heavy duty frame.

Model	Tubing/Pipe Size	Part #
DBS 44F	1" – 4" IPS	Please Call
Customer Must Specify Four Pipe Sizes and SDR's Per Unit		



MUSTANG HYDRAULIC DBG 60

- Mid-duty squeeze tool.
- Accommodates two pipe sizes.
- Heavy-duty frame.
- Includes SC-60 saddle clamps (see page 28)

Model	Tubing/Pipe Size	Part #
DBG 60	3" – 6" IPS	Please Call
Customer Must Specify Two Pipe Sizes and SDR's Per Unit		





MUSTANG HYDRAULIC DBM 60

- Mid-duty squeeze tool.
- Accommodates two pipe sizes.
- Heavy-duty frame.
- Includes 20A Pump and SC-60 saddle clamps

Model	Tubing/Pipe Size	Part #
DBM 60	3" – 6" IPS	Please Call
Customer Must Specify Two Pipe Sizes and SDR's Per Unit		



MUSTANG HYDRAULIC DBML 80

- Mid-duty squeeze tool.
- Accommodates two pipe sizes.
- Heavy-duty frame.
- Includes 20A Pump and SC-80 saddle clamps

Model	Tubing/Pipe Size	Part #
DBML 80	3" – 8" IPS	Please Call
Customer Must Specify Two Pipe Sizes and SDR's Per Unit		



MUSTANG HYDRAULIC DBH 1200B

- Heavy-duty squeeze tool.
- Accommodates four pipe sizes.
- Heavy-duty frame.
- Includes 25A Pump and SC-1200 saddle clamps

Model	Tubing/Pipe Size	Part #
DBH 1200B	6" – 12" IPS	Please Call
Customer Must Specify Four Pipe Sizes and SDR's Per Unit		



Ask your representative about our tool repair services

Call now to place an order
973-335-4800

MULCARE





MUSTANG GROUNDING ROD

- Attaches to upper jaw grease fitting.
- Insulated braided copper cable and cast copper spike.

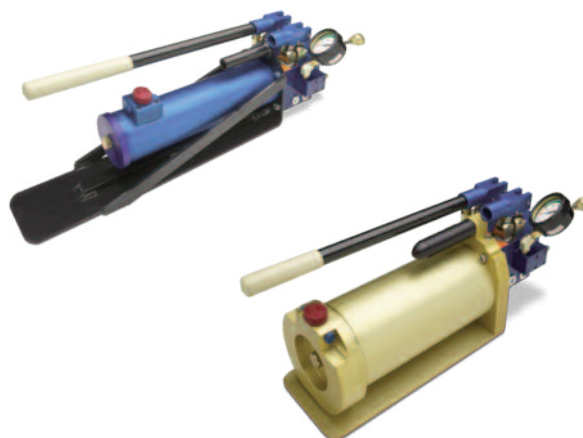
Model	Size	Part #
SEG 30	5' Cable, 12" Spike	121546-10



MUSTANG HYDRAULIC PUMPS

- 2 stage design for rapid movement of upper jaw.
- High capacity oil reservoir and built-in pressure relief valve.

Model	For use with	Part #
20A (no hose)	DBM 60 & DBML 80	122222-10
20A (with hose)	DBM 60 & DBML 80	122222-20
25A (with hose)	H Series Tools	122687-10



Ask your representative about our tool repair services

MUSTANG SADDLE CLAMPS

- Use with large pipe squeeze tools when additional compressive force is needed for difficult to squeeze PE pipe.
- SC-60 and SC-80 available in yellow (hydraulic) or blue (manual).

Model	Tubing/Pipe Size	Part #
SC-40/44	Fits Series 40/44 Squeeze tools	122179-20
SC-60	Fits Series 60 Squeeze tools	Please Call
SC-80	Fits Series 80 Squeeze tools	122179-10





TC-1

TC-1SR



TC-1 / TC-1SR TOPSIDE CLAMPS

- Squeeze tool is effective on PE pipe sizes: 1/2" - 1-1/4" CTS and 1/2" - 1" IPS.
- Rotating sleeve adjusts for multiple pipe sizes.
- Extension handles available. Custom lengths available.
- Customer must select 3 pipe sizes per unit

Model/Part	Tubing/Pipe Size	Part #
TC-1	1/2" - 1.25" CTS	Please Call
TC-1SR (slow release)	1/2" - 1.25" CTS	Please Call
Grounding rod	With copper wire	115402-10
Extension Handle	36"	113746-10
Locking Pin	NA	113745-10

TR270



TR650

TR170 TOP REACH CLAMP

Top-down remote squeeze-off solution for 1/2" - 1.25" CTS.

- Length: 6.5' / Width: 6.0" / Weight: 23.0 lb
- Standard Equipment:
 - Grounding rod with 10' copper cable
- Customer must select 3 pipe sizes per unit

TR270 TOP REACH CLAMP

Top-down remote squeeze-off solution for 1/2" - 2" IPS.

- Length: 6.5' / Width: 10.5" / Weight: 19.0 lb
- Standard Equipment:
 - 4 slap-on jaws specific to customer pipe sizes
 - Hard carrying case
 - Grounding rod with 10' copper cable
- Customer must select 4 pipe sizes per unit

TR650 TOP REACH CLAMP

Top-down remote squeeze-off solution for 3" - 6" IPS.

- Length: 6.5' / Width: 17.8" / Weight: 60 lbs
- Standard Equipment:
 - Grounding rod with 10' copper cable
- Customer must select 3 SDR's per unit



Model	Tubing/Pipe Size	Part #
TR170	1/2" - 1.25" CTS	Please Call
TR270	1/2" CTS - 2" IPS	Please Call
TR650	3" - 6" IPS	Please Call



REED RATCHET SHEARS

Model	Tubing/Pipe Size	Part #
RS1	Cuts through 1.25" CTS	100250-10
RS1PLT	RS1 with Corrosion Resistant Blade	100253-10
RS2	Cuts through 2"	100254-10
RS7290	Cuts 2" PE Pipe and PVC	114425-10

Model	Description	Part #
RS1B	RS1 Blade	100251-10
RS1BPLT	RS1PLT Plated Blade	100252-10
RS2B	RS2 Blade	100255-10
RS7290B	RS7290 Blade (fits Wheeler 7290)	118624-10



REED IN-LINE ROTARY CUTTER

- Creates no dust and chips fall where they are cut.
- Only 6"-8" clearance needed to turn PLAS around pipe.

Model	Tubing/Pipe Size	Part #
PLAS1PE	Cuts through 6" – 12" PE Pipe	121915-10
PLASPEB	Replacement Blade	121944-10



REED GUILLOTINE CUTTERS

Model	Tubing/Pipe Size	Part #
HPC4	2" - 4"	100244-10
HPC8	3" - 8"	100246-10
HPC12	4" - 12"	100243-10

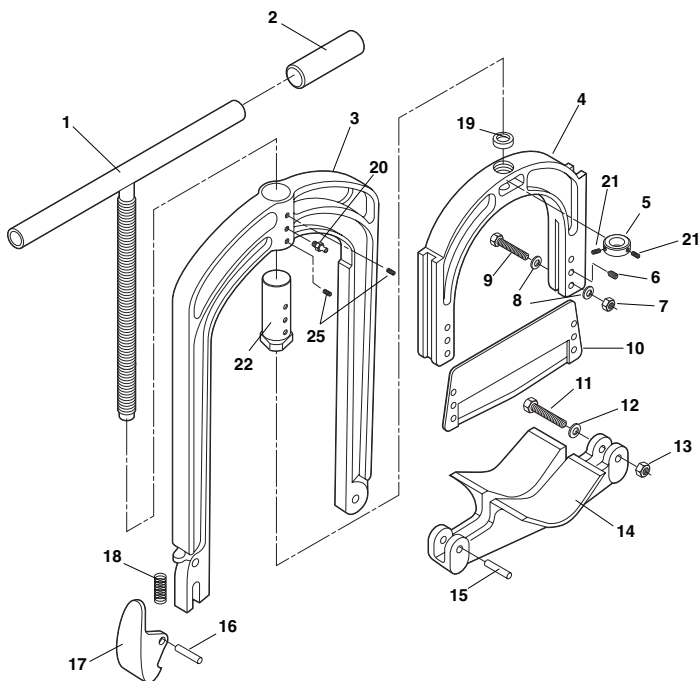
Model	Description	Part #
HPC4B	HPC4 Replacement Blade	100245-10
HPC8B	HPC8 Replacement Blade	100247-10
HPC12B	HPC12 Replacement Blade	100534-10





REED GUILLOTINE HPC4 & HPC8 REPLACEMENT PARTS

Ref. No.	Description	HPC4 Item #	HPC8 Item #	Qty. Used
1	Feed Screw Assembly	94113	94005	1
2	Black Handle Grip	40070	40095	2
3	Upper Yoke	94120	94012	1
4	Crosshead	94115	94003	1
5	Collar	40328	94144	1
6	Blade Set Screw	30178	30173	2
7	Hex Nut	30123	30176	4
8	Lock Washer	30177	30175	8
9	Blade Screw	94126	94132	4
10	Blade	40329	40027	1
11	Lower Yoke Cap Screw	94133	40031	1
12	Steel Washer	30180	30011	1
13	Flexioc Nut	30179	30143	1
14	Lower Yoke	94116	94002	1
15	Lower Yoke Pin	94123	94007	1
16	Latch Pin	94124	94011	1
17	Latch	93115	93117	1
18	Latch Spring	40046	40030	1
19	Thrust Washer	98057	94145	1
20	Grease Fitting	40338	40338	1
21	Collar Set Screw	N/A	40090	2
22	Internal Nut	94603	94140	1
23	Roller	N/A	N/A	12
24	Shoulder Screw	N/A	N/A	12
25	Set Screw	30019	30019	2



Ask your representative about our tool repair services

Call now to place an order
973-335-4800

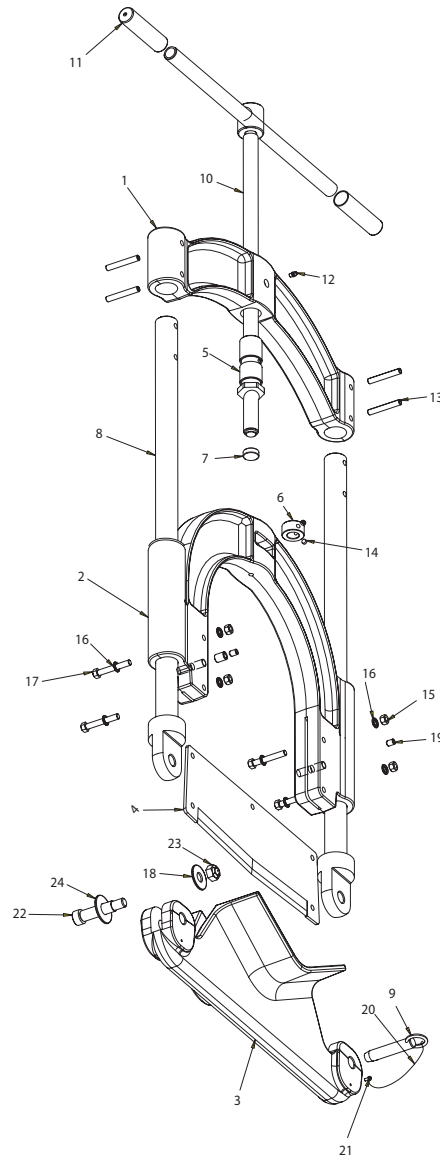
MULCARE





REED GUILLOTINE HPC12 REPLACEMENT PARTS

Ref. No.	Description	HPC12 Item #	Qty. Used
1	Upper Yoke	94900	1
2	Cross Head Assembly	94901	1
3	Lower Yoke	94902	1
4	Blade	94903	1
5	Nut	94906	1
6	Collar	94907	1
7	Thrust Insert	94908	1
8	Guide Rod Weldment	94913	2
9	Quick Release Pin	94911	1
10	Screw Weldment	94915	1
11	Handle Grip	40095	2
12	Grease Fitting	40338	1
13	Guide Pin	30013	4
14	Set Screw	40090	2
15	Hex Nut	39032	4
16	Lock Washer	30033	8
17	Leg Bolt	30187	4
18	Washer	34911	1
19	Set Screw	34920	2
20	Lanyard	94917	1
21	Screw	34907	1
22	Shoulder Bolt	34908	1
23	Lock Nut	30111	1
24	Washer	34910	1



STATIC DISCHARGE SAFETY

- Statikil PE - topical anti-stat for PE pipe
- Static Discharge Alarm

SEE PAGE 67
FOR MORE
INFORMATION



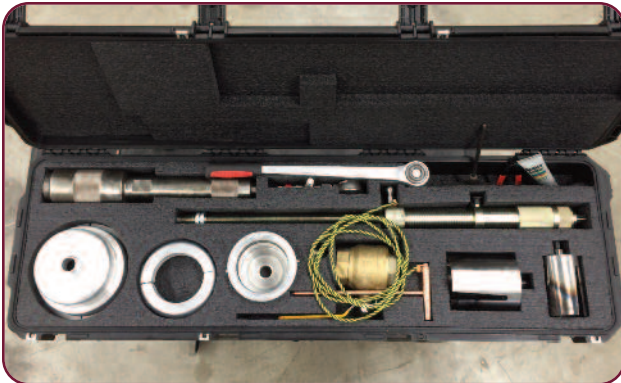


*REED PLAS1 being used
in a shallow trench.*

Located on Page 30

Safe, gas-free tapping of plastic main is essential in today's gas industry. Mulcare not only offers the tools, but can also provide training and field support to make sure your crew is comfortable with the latest technology.

**NUPI HOT TAP SYSTEM
SKINNER DRILLING DEVICES**



Hot Tap System



Branch Saddle Assembly Set-up

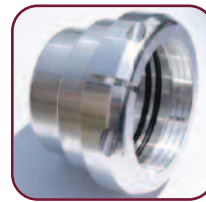


Camera Fitting Set-up

NUPI CLOSE QUARTERS HOT TAP SYSTEM

- Effectively taps 2" - 8" laterals on PE main up to 12".
- Same assembly can be used for camera fittings.
- Gas free to 120 psi (no-blow).
- Fastens directly to valve, no extra fusions needed.
- Ultra compact design.

Model	Pipe Size	Part #
Hot Tap System	2" – 12" Mains	122448-30



Model / Size	Part #
Bell Adapter – 2"	121761-10
Bell Adapter – 3"	122786-10
Bell Adapter – 4"	121762-10
Bell Adapter – 6"	121763-10
Bell Adapter – 8"	122789-10



Model / Size	Part #
Cutter – 2"	121767-10
Cutter – 3"	122788-10
Cutter – 4"	121768-10
Cutter – 6"	121769-10
Cutter – 8"	122787-10



Camera Fitting Kit

122790-10



Pressure Gauge

122586-10



Gas Main Tapping

www.mulcare.com

SKINNER DRILLING DEVICES

METHOD A – STREET TEE IN SERVICE SADDLE

Top Thread of Tee (inches)	3/4		1		1-1/4		1-1/2		2	
Drill Device No.	4		7		7		7		7	
Adapter No.	1		2		3		4		5	
Stock cutter numbers and diameters that can be used under this method	No.	Dia. (in.)	No.	Dia. (in.)	No.	Dia. (in.)	No.	Dia. (in.)	No.	Dia. (in.)
	1	5/8	22	7/8	7	1	19	1-3/16	21	1-7/8
	2	1/2	11	3/4	22	7/8	7	1	20	1-3/8
	3	3/8	2	1/2	2	1/2	11	3/4	19	1-1/5
	4	1/4	4	1/4	4	1/4	2	1/2	7	1



SKINNER DRILLING DEVICES: METHOD B – SERVICE SADDLE WITHOUT STREET TEE

Top Thread of Tee (inches)	3/4		1		1-1/4		1-1/2		2	
Drill Device No.	4		7		7		7		7	
Adapter No.	14		15		16		23		24	
Stock cutter numbers and diameters that can be used under this method	No.	Dia. (in.)	No.	Dia. (in.)	No.	Dia. (in.)	No.	Dia. (in.)	No.	Dia. (in.)
	11	3/4	7	1	19	1-3/16	20	1-3/8	21	1-7/8
	1	5/8	11	3/4	7	1	19	1-3/16	20	1-3/8
	2	1/2	2	1/2	11	3/4	7	1	19	1-3/16
	4	1/4	4	1/4	2	1/2	11	3/4	7	1



SKINNER DRILLING DEVICES: METHOD C – TEE OR PIPE NIPPLE WELDED TO MAIN

Top Thread of Tee (inches)	3/4		1		1-1/4		1-1/2		2	
Drill Device No.	4		7		7		7		7	
Adapter No.	6		7		8		9		10	
Stock cutter numbers and diameters that can be used under this method	No.	Dia. (in.)	No.	Dia. (in.)	No.	Dia. (in.)	No.	Dia. (in.)	No.	Dia. (in.)
	11	3/4	7	1	19	1-3/16	20	1-3/8	21	1-7/8
	1	5/8	11	3/4	7	1	7	1	19	1-3/16
	2	1/2	2	1/2	11	3/4	11	3/4	7	1
	4	1/4	4	1/4	2	1/2	2	1/2	11	3/4




SKINNER DRILLING DEVICES: METHOD D – VALVE CONNECTED TO MAIN

Top Thread of Tee (inches)	1		1-1/4		1-1/2		2	
Drill Device No.	10		10		10		10	
Adapter No.	27		26		25		22	
Stock cutter numbers and diameters that can be used under this method	No.	Dia. (in.)	No.	Dia. (in.)	No.	Dia. (in.)	No.	Dia. (in.)
	7	1	19	1-3/16	20	1-3/8	21	1-7/8
	11	3/4	7	1	19	1-3/16	20	1-3/8
	2	1/2	11	3/4	7	1	19	1-3/16
	4	1/4	2	1/2	11	3/4	7	1



Please contact us for help in ordering the correct equipment for your application.





An odorization set-up on a live gas main. The main was tapped utilizing the NUPI 8x2 Camera Fitting and NUPI Close Quarters Hot Tap System.

Look for the Nupi Close Quarters Hot Tap System on Page 35

Reamer kits effectively remove scale, slag, and weld beads from old steel services making the insertion of plastic much safer and easier.

REAMER KIT

CURB VALVE DRILL KIT






NOSE CONES










MULCARE GAS LINE REAMER KIT

- Smart, efficient way to clean a gas line prior to the insertion of polyethylene tubing.
- A powerful drilling and chipping action thoroughly removes any deposits in the steel gas line.
- Kit includes everything needed to thoroughly clean a gas line, including a tool box to hold all the components.
- For heavily obstructed 3/4" gas lines, we recommend the special spherical "Cherry Burr" cleaning head.

PARTS

Existing Pipe Size	Complete Kit						See picture above	
		Qty 1	Qty 1	Qty 1	Qty 3	Qty 12	Qty 1	Qty 1
Existing Pipe Size	Complete Kit	Air Motor	Universal Joint	Single-Pin Head	Cone Cutter	Star Cutter	Wrench	Tool Box
	Part #	Part #	Part #	Part #	Part #	Part #	Part #	Part #
3/4" IPS (19.1mm)	100033-10	100031-10	100036-10	100035-10	100032-10	100034-10	100037-10	100030-10
1" IPS (25.4mm)	100040-10	100038-10	100043-10	100042-10	100039-10	100041-10	100044-10	
1-1/4" IPS (31.8mm)	100047-10	100045-10	100050-10	100049-10	100046-10	100048-10	100051-10	
1-1/2" IPS (38.1mm)	100054-10	100052-10		100056-10	100053-10	100055-10	100058-10	
2" IPS (50.8mm)	100061-10	100059-10	100064-10	100063-10	100060-10	100062-10	100065-10	

ACCESSORIES

ACCESSORIES							
Existing Pipe Size	100 ft Air Hose	50 ft Air Hose	Air Line Lubricator	Wilsolube Lubricant	Flexible Holder	MM Adapter	Cherry Burr
	Part #	Part #	Part #	Part #	Part #	Part #	Part #
3/4" IPS (19.1mm)	115184-20	100019-20	100026-10	100029-10	100066-10	100067-10	100068-10
1" IPS (25.4mm)	115185-20	100021-20	100027-10		100069-10	100070-10	100071-10
1-1/4" IPS (31.8mm)					100072-10	100073-10	100074-10
1-1/2" IPS (38.1mm)	115186-20	100023-20	100028-10		100075-10	100076-10	100077-10
2" IPS (50.8mm)					N/A	N/A	N/A

MULCARE X-PANDER NOSE CONES

- X-Pander nose cones make plastic insertion smooth and easy.
- Prevents damage to your plastic insert.



Pipe Size	Part #
1/2" IPS	100193-10
1/2" CTS	100194-10
3/4" IPS	100195-10
1" IPS	100196-10
1" CTS	100197-10

Pipe Size	Part #
1.25" IPS	100198-10
1.25" CTS	114927-10
1.5" IPS	100199-10
2" IPS	100200-10



WILSON CURB VALVE DRILL KIT

- Designed for drilling through valves and other obstructions in a gas line so a replacement line can be inserted inside the old line.
- Kit includes hole saws for 3/4", 1", 1-1/4", 1-1/2" and 2" gas lines.
- The Curb Valve Drill Kit includes all the tools and components needed to quickly and efficiently drill through valves and other gas line obstructions, including a tool box to hold all the components.
- One and two-foot extension rods are easily assembled, enabling the tool to reach over 50 feet into a gas line.



Model	Quantity	Part #
Full Kit	1	100012-10
Air Motor	1	100001-10
Hole Saw 3/4"	1	100006-10
Hole Saw 1-1/4"	1	100007-10
Hole Saw 1-1/2"	1	100008-10
Hole Saw 2"	1	100009-10
Carrying Case	1	100002-10
Drive Shank 1 ft	1	100004-10
Drive Shank 2 ft	1	100005-10
Saw Adapter (1/2 - 20)	2	100017-10
Saw Adapter (5/8 - 18)	2	100015-10
Rod Assembly 1 ft	2	100014-10
Rod Assembly 2 ft	25	100016-10
Rod Adapter	15	100013-10
Dead Handle	1	100003-10
Jacobs Chuck 1/2"	1	100011-10
Jacobs Chuck Key	1	100010-10





*Kleiss stop off system being used
on a live main.*

Located on Page 47

A valve maintenance program is critical to maintaining a safe gas distribution system.

Having the right tools for the right job saves time and promotes a safe working environment.

Our wide selection of pipe tools can be set up to tackle almost any job.

VALVE GATE KEYS

VALVE EXTENSIONS

CLEANOUT TOOLS

HYPREGUN

PLUG VALVE SEALANT

SEALANT INJECTION RODS



REED VALVE GATE KEYS

- Compact size.
- Wide choice of attachable tools.
- Several socket configurations.



Main Valve Key



Main Valve Kit



Optional Extensions

Model	Length	Part #
Main Valve Key	6' 8"	121623-10
Main Valve Key Kit	12' 7"	121742-10

Length represents the key as sold without any extra pieces

CLEANOUT TOOLS

- Various styles available.
- Remove stones, dirt and debris from curb and valve boxes.



Valve Spoon



Duckbill



Clamshell

Model	Part #
Valve Spoon	Please Call
Duckbill Cleanout (CT106)	Please Call
Clamshell (Small CT110)	Please Call
Clamshell (Large CT109)	Please Call



FLOWERVE NORDSTROM HYPREGUN-PLUS

- Compact and efficient design.
- Air operated sealant injection with 15,000 psi gauge.
- Versatile design for servicing small or large valves.
- Motors operate at 100:1 pressure on 100 to 125 psi air.
- Ten foot hose is easily extended into tight spaces.

Model	Size	Part #
Hypregun-Plus 5G	5 Gallon	118171-10
Hypregun-Plus 5Q	5 Quart	113543-10



FLOWERVE NORDSTROM 400-D HAND GUN

- Versatile hand-held operation.
- Perfect for tight quarters or remote locations.
- Rated at 10,000 to 11,000 psi.
- Dependable performance under all conditions.

Model	Size	Part #
400-D Hand Gun	—	100278-10
400-A Hand Gun	—	100596-10
Case	—	122243-20
Valve Purge	—	VXX



PLUG VALVE SEALANT

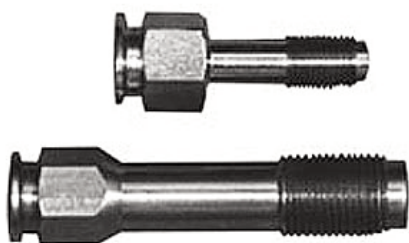
Sealant	Size A	Size B	Size C	Size D	Size G	Size J	Size K	Gun Pak	Cartridge	5 Quart	5 Gallon
Quantity	24	24	24	24	24	6	12	6	4	1	1
Diameter	.25	.41	.55	.66	.86	1.47	1.53	—	—	—	—
Length	.88	1.38	2	2.44	3.38	8.75	10	—	—	—	—

Please call to order for your specific application.

SEALANT COMPOSITION

Sealant	167	234	421	555	654	755	950	960	1033
Color	Gray	White	Cream	Brown	Brown	Pink	Cream	Cream	Green
Base Oil	Hydrocarbon	Silicone	Hydrocarbon	Vegetable Oil	Hydrocarbon	Polyglycols	Synthetic	Synthetic	Synthetic

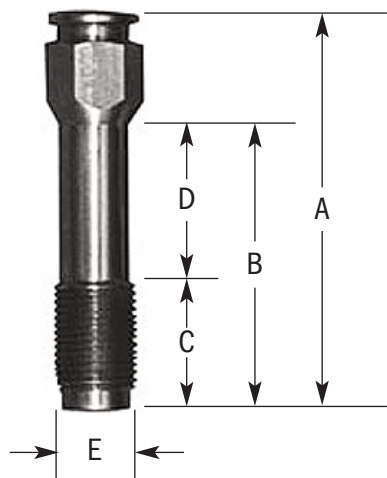




SEALANT INJECTION RODS & FITTINGS

- Sizes 3' – 8'.
- All fittings rated at 10,000 psi or above.
- Available in painted or stainless steel.

Model	Size	Part #
Button Head Fitting	1/4"	115095-40
Button Head Fitting	3/8"	115095-10
Button Head Fitting	1/2"	115095-20
Button Head Fitting	3/4"	115095-30
Giant Button Head Fitting	1/4"-18 NPT	115095-50
Button Head Coupler	—	115169-10



FITTING CHART

	A	B	C	D	E
1/4"	2.36"	1.5"	1.25"	.25"	.52"
3/8"	3.06"	2.0"	1.8"	.20"	.65"
1/2"	3.3"	2.7"	2.1"	.60"	.81"
3/4"	4.68"	3.5"	1.7"	1.8"	1"

KRAVITCH VALVE GATE KEYS

- Various styles available.
- Offered in different shank materials.
- Several socket configurations.



Model	Size	Part #
Long Eye Operator Gate Key	3' – 6'	Please Call
Fixed Open Gate Valve Socket	1/2" – 2"	Please Call

Flow Stop Off, Bags & Plugs

Mulcare stocks a large array of plugs, bags and stoppers. Our staff is well-versed in making sure you have the right stopper for your application.

MCS KLEISS FLOW STOP SYSTEM

WOOD PLUGS

SERVISTOPS

X-PANDER PLUGS

EXPANSION PLUGS

SAFETY BAGS

GOODMAN STOPPERS



MCS KLEISS FLOW STOP SYSTEM

- Lightweight, easy-to-handle and install
- Designed for all pipe materials – cast iron, steel, polyethylene, and PVC
- Use with a range of pipe sizes with pressures up to 60 psi
- Only one size drilling cutter needed for all pipe sizes
 - 3" - 8" System – 2" Cutter
 - 10" - 16" System – 4" Cutter
- Single tap with one tool provides multiple functions
 - System line pressure monitoring
 - Downstream pressure monitoring
 - MDS Stopper inflation and monitoring
 - Pipeline purging/evacuating and venting
- Patented MDS Stopper
- 3X safety factor with a gas tight seal

Model	Tubing/Pipe Size	Part #
MCS60-38	3" - 8"	Please Call
MCS60-1016	10" - 16"	Please Call
Drilling Kit	3" - 8"	Please Call
Drilling Kit	10" - 16"	Please Call



Drilling Kit



Flow Stopping System



Ask your representative about our tool repair services

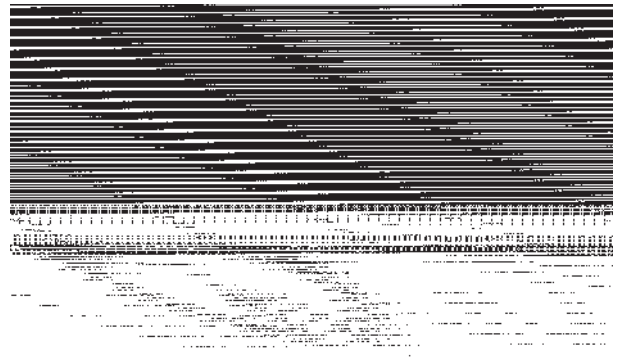


Flow Stop Off, Bags & Plugs

www.mulcare.com

X-PANDER PIPELINE SAFETY PLUGS

- Use to shut off gas flow for testing, service or even to keep dirt out of pipes during installation.
- Plug sizes 3/4" – 2".
- Wrench sizes 7" – 72" long.
- Custom sizes available.
- Can be used over and over.



Model	Length	Part #
X-Pander Wrench	7"	100184-10
	12"	100185-10
	18"	100186-10
	24"	100187-10
	36"	100188-10
	48"	100189-10
	60"	100190-10
	72"	100178-10

Model	Tubing/Pipe Size	Part #
X-Pander Plug	1/2"	100178-10
	3/4"	100179-10
	1"	100180-10
	1.25"	100181-10
	1.5"	100182-10
	2"	100183-10

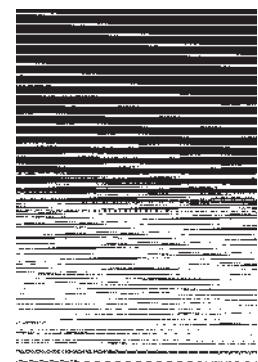
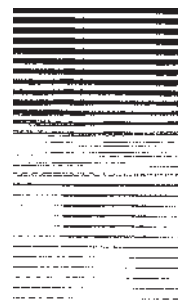
SERVICE WORK EXPANSION PLUGS

- Can be used for temporary gas shutoff or in a tee during service renewal or installation. 1/2" - 1.25" sizes available.

MAIN WORK EXPANSION PLUGS

- Can be used in either bell or spigot end for testing or temporary shut-off. 2" - 6" sizes available.
- Larger sizes readily available. Please contact us for help ordering sizes larger than 6".
- Overnight plugs.

Model	Tubing/Pipe Size	Part #
Type OA	1/2"	100420-10
	3/4"	100421-10
	1"	100422-10
	1.25"	100423-10
Type A	2"	Please Call
	3"	100427-10
	4"	100428-10
	6"	121366-10



MULCARE

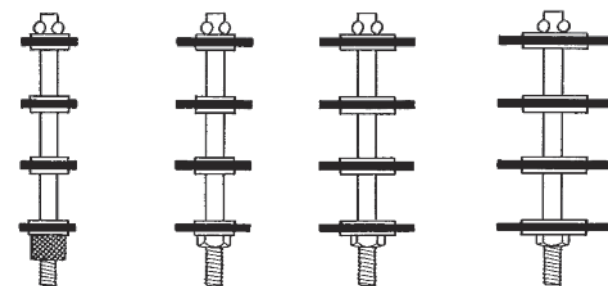
Call now to place an order
973-335-4800



WOOD PLUGS

- Tapered wooden plugs for copper tubing, cast iron, steel and polyethylene pipe.
- 1/2" - 36" available from stock
- Custom sized, designed and fabricated to meet individual specifications.

Model	Tubing/Pipe Size	Part #
Wood Plug	1/2" – 36"	Please call



SERVISTOPS

- Shut-off gas flow for pressures not exceeding 2-10 psi.
- Push Servistops into pipe with available t-wrench.
- No expansion necessary.

Model	Tubing/Pipe Size	Part #
Servistop	3/4"	100135-10
	1"	100136-10
	1.25"	100137-10
	1.5"	100138-10
	2"	100139-10

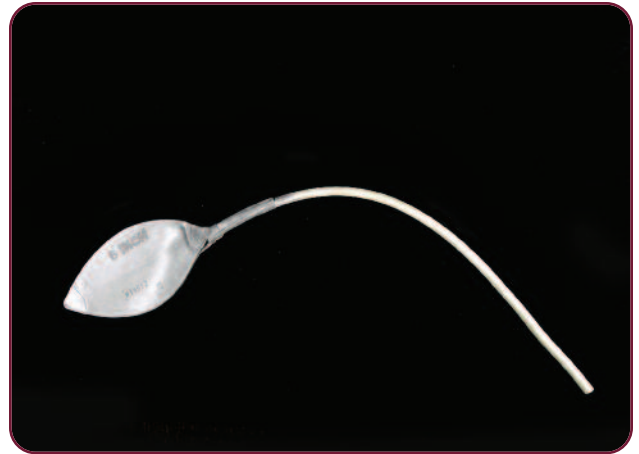
Model	Length	Part #
Servistop Wrench	9"	100143-10
	15"	100144-10
	18"	100145-10
	36"	100146-10
	48"	116847-10
	72"	100147-10



SAFETY MAIN BAGS TYPE "PS"

- Available sizes 2-3", 4", 6", 8", 10", 12".
- All rubber construction.

Please contact us for help in ordering the correct size for your application.



SAFETY MAIN BAGS TYPE "B"

- Available sizes 2-3", 4", 6", 8", 10", 12".
- 6 panel rubber construction.
- Nitrile available by request.

Please contact us for help in ordering the correct size for your application.

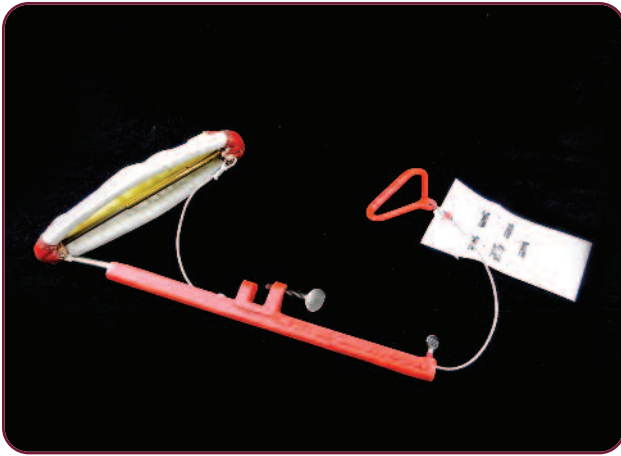


SAFETY MAIN BAGS TYPE "C"

- Available sizes 2" – 42".
- Canvas covered rubber bags.
- Nitrile available by request.
- Great for cast iron and rough surfaces.
- Optional 0-30# pressure gauge

Please contact us for help in ordering the correct size for your application.

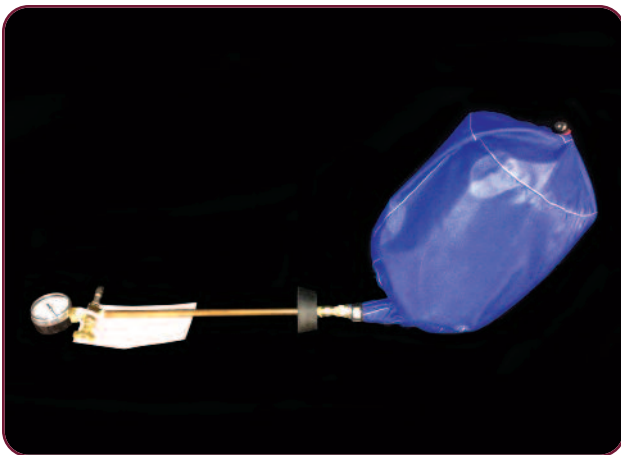




GOODMAN-PEDEN STOPPERS

- Available sizes 2" – 30".
- Spark free brass construction.
- Custom sized for steel and cast iron service.

Please contact us for help in ordering the correct size for your application.



SAFETY DIRECTIONAL GAS BAGS TYPE "D"

- Available sizes 2" – 12".
- Ballistics grade nylon.
- Custom sizes available.
- Brass directional spine for easy insertion.
- Upstream pressure monitoring available.

Please contact us for help in ordering the correct size for your application.



GARDNER GOODMAN STOPPERS

- Available sizes 2" – 48".
- Brass inflator sold separately.
- Nitrile available by request.

Please contact us for help in ordering the correct size for your application.

E.H. Wachs is the industry standard for cutting cast iron and steel pipe.

Mulcare stocks many replacement parts and offers support for this equipment.

GUILLOTINE CUTTERS

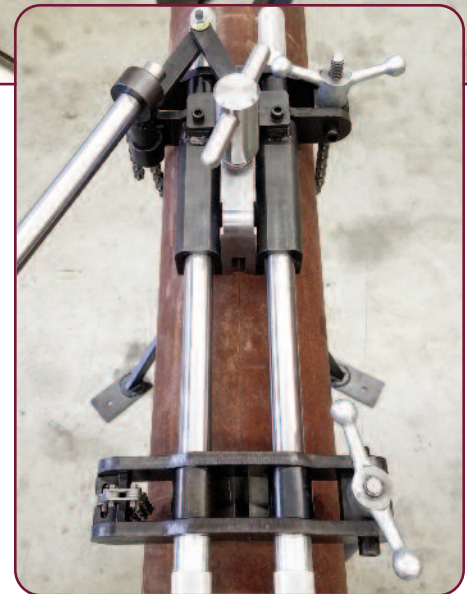
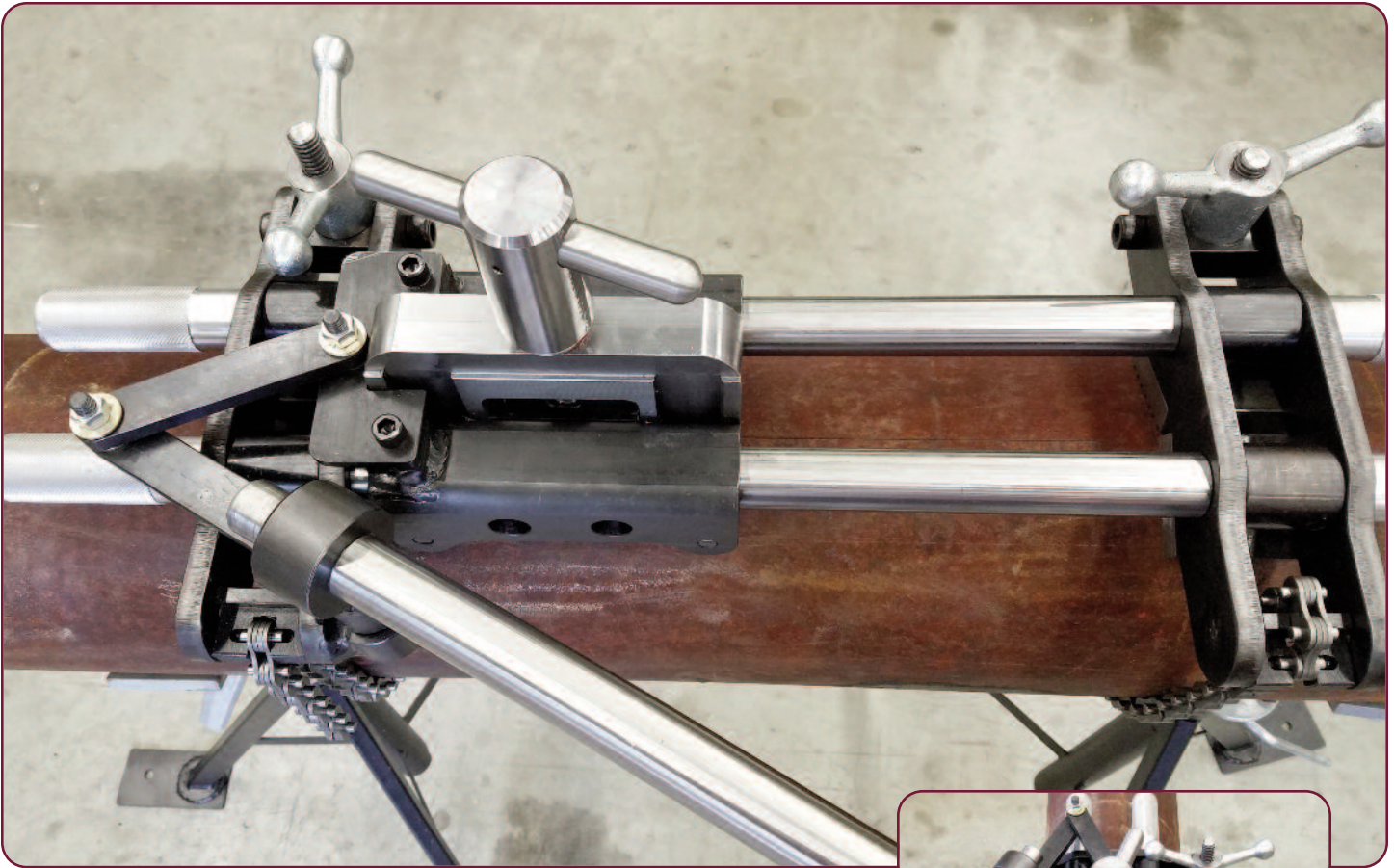
TRAV-L-CUTTER

SOIL PIPE CUTTERS

SQUEEZE TOOL

HINGED CUTTERS

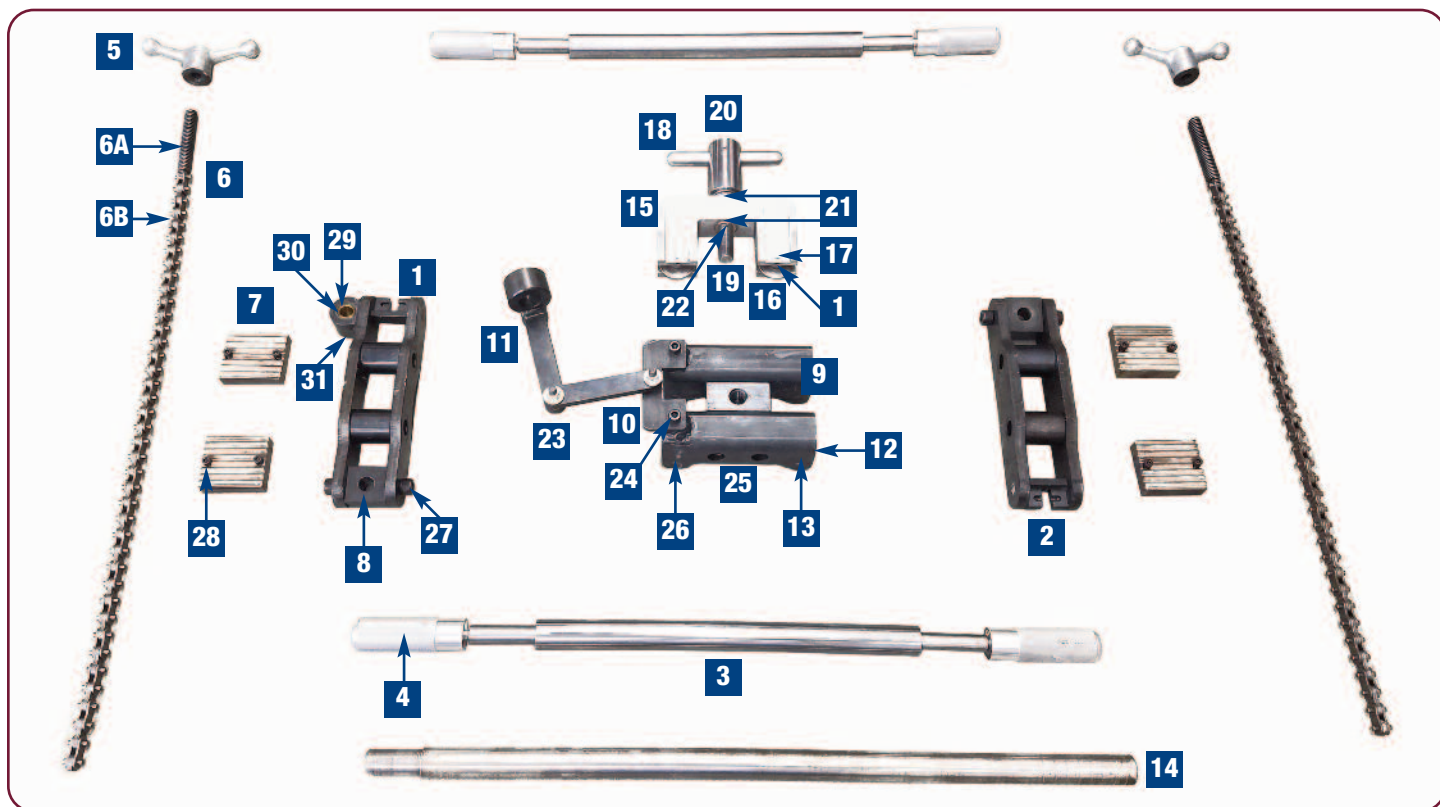
TRI-POD VISES



PAC28 - AXIAL PIPE CUTTER 2" - 8"

- Make spark-less longitudinal cuts on 2" - 8" steel or cast iron pipe without damaging PE pipe inside
- Use a standard four wheel cutter (sold separately) to effectively remove a section of casing pipe
- Weighing less than 75 lbs allows for single man operation
- Rugged machined steel components and hardened cutter wheels.
- Easily field maintained

Model	Part #
PAC28	122908-10



PAC28 REPLACEMENT PARTS

Ref. No.	Description	Part #	Pieces per tool
1	Left Support (w/hole for Pivot Link)	122916-10	1
2	Right Support	122917-10	1
3	Support Bar (w/out hand grips)	122918-10	2
4	Hand Grip	122919-10	4
5	Chain Handle	122920-10	2
6	Link Chain and Threaded Rod Screw Assembly	122921-10	2
6A	Threaded Rod Screw Assembly	122921-30	2
6B	Link Chain	122921-20	2
7	Jaw	122922-10	4
8	Pivot Block	122923-10	2
9	Carriage	122924-10	1
10	Mounting Plate	122925-10	1
11	Pivot Link Assembly (Includes Bolts/Nuts/Washers)	122926-10	1
12	Roller	122927-10	4
13	Roller Pin	122928-10	4
14	Operating Handle	122929-10	1
15	Yoke	122930-10	1

Ref. No.	Description	Part #	Pieces per tool
16	Cutter Wheel (Generic wheels can be used but not recommended)	122931-10	2
17	Cutter Wheel Pin	122932-10	2
18	Feed Screw Crank	122933-10	1
19	Feed Screw	122934-10	1
20	Feed Screw Crank Pin	122935-10	1
21	Thrust Bearing	122936-10	2
22	Feed Screw Pin	122937-10	1
23	Bolt/Nut/Washers for Pivot Link Assembly	122938-10	2
24	Mounting Plate Allen Screws	122939-10	2
25	Carriage Screws	122940-10	1
26	Cutter Wheel Retention Screws	122941-10	8
27	Pivot Block Screw	122942-10	4
28	Jaw Allen Screws	122943-10	8
29	Brass Bushing for Left Support	122944-10	1
30	Brass Washers	123168-10	2
31	Snap Ring	123169-10	1





E.H. WACHS GUILLOTINE CUTTERS

- Pneumatic drive reciprocating pipe saw designed to cut metal pipes, multi stranded casing strings and other solids from 2" to 24" (DN50-300 or 5 to 30 cm).

Model	Size	Part #
Super C	2" – 12"	114125-10
Super D	10" – 24"	117915-10

Model	Part #
Old Style Blade for Super C	113835-10
Standard Blade for Super C	114127-10
Standard Blade for Super D	114231-10
Heavy Duty Blade for Super D	117879-10



Factory repair service available



E.H. WACHS TRAV-L-CUTTER

- Air powered Model E portable pipe cut and bevel milling machine with 6" to 48" (DN150-1200) capacity.

Model	Part #
Model E Trav-L-Cutter	116940-10

Model	Part #
Slitting Blade 6" x 3/16" HSS (1" wall)	114528-10
Slitting Blade 8" x 3/16" HSS (2.125" wall)	119688-10



Factory repair service available



REED SOIL PIPE CUTTERS

- Fastest way to cut cast iron soil pipe.
- Available in single stroke or ratcheting models.

Ratchet Model	Pipe Size	Part #
SC49-6	1.5" – 6"	REED 08049
SC49-8	1.5" – 8"	REED 08050
SC49-10	1.5" – 10"	REED 08051
SC49-12	1.5" – 12"	REED 08052
SC49-15	1.5" – 15"	REED 08053

Single Stroke Model	Pipe Size	Part #
SC59-6	1.5" – 6"	REED 08059
SC59-8	1.5" – 8"	REED 08060
SC59-10	1.5" – 10"	REED 08061
SC59-12	1.5" – 12"	REED 08062
SC59-15	1.5" – 15"	REED 08063



REED DESCALER

- Faster and more effective than chisels, chains or files.
- Needs only 2" of clearance around the pipe.

Model	Size	Part #
DS12	3" – 12"	100241-10
DS36	3" – 36"	118015-10



MUSTANG EMERGENCY STEEL PIPE SQUEEZE TOOLS

- Hand operated, lightweight, self contained hydraulic squeeze tools
- Short pump stroke for rapid emergency closure
- Rounded jaw which lessen the chances of severing brittle pipe or pipe of unknown chemistry
- Pressure Relief Bypass System for increased safety
- Latched lower jaw and 90° swivel head

Model	Tubing/Pipe Size	Part #
PS-62B	3/4" - 2" IPS – 18 tons of force	121830-10
PS-75	3/4" - 2" IPS – 34 tons of force	121830-20



PS-62B



PS-75





REED 4 WHEEL HINGED CUTTERS

- Requires only 90° - 100° swing range.
- Only needs 4" clearance around pipe.
- 1" - 12" range.
- Cuts steel, stainless steel, cast and ductile iron.

Model	Tubing/Pipe Size	Part #
H4S	2" - 4"	121319-10
H6S	6" - 8"	116057-10
H12S	8" - 12"	116059-10

Full assortment of replacement cutter wheels available



REED TRI-POD VISE

- Chain vise style.
- Hold up to 6" pipe.
- Reinforced undertray for stability and tool storage.

Model	Tubing/Pipe Size	Part #
R450+	1/8" - 6"	117357-10
R470+ (larger base)	1/8" - 6"	Please Call

*Mulcare stocks PE valves and electrofusion fittings
for large utility stock requirements.*

PE PIPE ELECTROFUSION REPAIR
ELECTROFUSION FITTINGS
BRANCH SADDLES
CAMERA FITTINGS
POLYVALVES
FOAM PIGS
ANTI-THEFT/STOPPER PLUG



NUPI VARIABLE LENGTH REPAIR SLEEVE (VLRS)

The Variable Length Repair Sleeve (VLRS) is a modular system of electrofusion shells that can be installed contiguously and welded on pipes that have notches, scrapes or damage along the axis.

- Rated up to 124 psi
- Effective on all PE resins
- Included undersaddle clamp for ease of installation
- Universal barcode technology to complete fusion

Model	Pipe Size	Part #
Standard Assembly	4" IPS - 180°	121584-30
	6" IPS - 180°	121584-50
Middle Assembly	4" IPS - 180°	121584-40
	6" IPS - 180°	121584-60



NUPI BUTT FUSION REPAIR SLEEVE (BFRS)

The Butt Fusion Repair Sleeve (BFRS) is a safety/repair system to be used to permanently reinforce suspect butt fusion welds.

- Effective on all PE resins
- Rated up to 124 psi
- Universal barcode technology to complete fusion
- Clamps and cables sold separately

Model	Pipe Size	Part #
Standard Assembly	2" IPS - 360°	121584-70
	4" IPS - 360°	121584-10
	6" IPS - 360°	121584-20
	8" IPS - 360°	121584-80
	12" IPS - 360°	121584-90
Installation Kit	Includes wrench, clamps, & jumper wires	122619-20

**SEE OUR DIGITAL
PIT/SCRATCH DEPTH
GAUGE ON PAGE 70**





NUPI TAPPING TEES

- 1.25" - 12" main sizes with 1/2" CTS - 2" IPS outlets available.
- Service and high volume sizes available for SPT & HVPT.
- Unique dual seal, no blow tapping performance.
- Multiple levels of quality control.
- No special tools needed; plastic or strap underclamp included with every fitting.

Please contact us for help in ordering the correct size for your application.



NUPI ELECTROFUSION COUPLINGS

- 1/2" service to 12" main available.
- Multiple levels of quality control.
- Specialty reducers, elbows, tees, and endcaps available.

Please contact us for help in ordering the correct size for your application.



NUPI CAMERA & BRANCH SADDLES

- Camera fittings come standard with completion plug for a gas tight seal.
- No special tools needed, plastic or strap underclamp included with every fitting.
- Electrofusion branch saddles as large as 12" x 6" available for easy main extension projects.
- NPT series available.

Please contact us for help in ordering the correct size for your application.





POLYVALVE, LLC

- 1/2" to 12" ball valves available.
- No metal internal parts.
- Bubble-tight shutoff from dual elastomeric seats.
- Fused body shell eliminates leak paths to atmosphere.
- High-grade polymeric materials eliminate corrosion.

We offer a full range of Polyvalve, LLC products.

Please contact us for help in ordering the correct size for your application.



FOAM PIGS

- Used for light cleaning, air removal prior to hydrostatic testing, water evacuation and drying.
- Their resilience enables them to negotiate short radius elbows, miter bends, and major diameter reductions.
- Sizes from 2" - 42".

We offer a full range of foam pigs.

Please contact us for help in ordering the correct size for your application.



VALVE BOX ANTI-THEFT

- Expandable EPDM plug blocks pipeline against tampering and gas theft.
- Standard diameters of 3.5" to 8.5".
- Custom sizes can be ordered upon request.
- 36" wrench sold separately.

We offer a full range of Goodman products.

Please contact us for help in ordering the correct size for your application.

Marking, Locating & Leak Detection

ELECTRONIC BALL MARKERS
PE PIPE LOCATING TOOLS
DYNATEL LOCATORS
BAR PULLER
DYNAMIC CONE PENETROMETER
DIGGING BARS
PROBE BARS



3M™ BALL MARKERS

- Depth of up to 5'.
- Unique self-leveling design ensures the marker is always in an accurate, horizontal position.
- 3M-iD markers enable data to be stored in the marker to ensure positive identification of facilities.
- Water resistant polyethylene shells are impervious to minerals, chemicals and temperature extremes.

Model	Description	Part #
EMS Ball Marker 1405-XR	Passive	100681-20
iD Ball Marker 1425-XR/iD	Programmable	118971-10

3M™ ELECTRONIC MARKERS

- Near-surface marker - depth of up to 3' (0.9 meters).
- Mini-markers - depth of up to 6' (1.8 meters).
- Full Range markers - depth of up to 8' (2.4 meters).
- EMS Rope - depth of up to 4' (1.2 meters).
- EMS Marker Tape - depth of up to 2' (0.61 meters).

Model	Description	Part #
Near-Surface Marker - 1436	Passive	100682-20
iD Near-Surface Marker 1436-XR/iD	Programmable	Please Call
Mini-Marker - 1259	Passive	100683-20
Full Range Marker - 1254	Passive	118096-20
iD Full Range Marker - 1254-XR/iD	Programmable	118096-50
EMS Rope - 7705-HTS-Gas	Passive	118096-50
EMS Marker Tape - 7605-XRCT-Gas	Passive	118096-50



3M™ DYNATEL™ ELECTRONIC MARKER SYSTEM LOCATORS

- Pinpoint the depth and location of all existing models of properly installed underground passive EMS markers.
- Locate, read and write to 3M iD markers.
- Conduct direct depth reading of markers.

Model	Part #
Dynatel™ iD Locator 1420	100687-10
Dynatel™ Cable/Pipe Locator 2250M	120219-10
Dynatel™ iD Locator 7420	122457-10



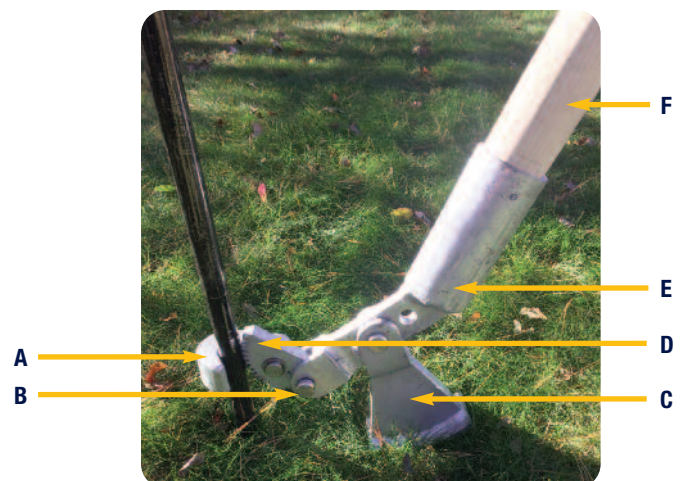
PERC BAR PULLER

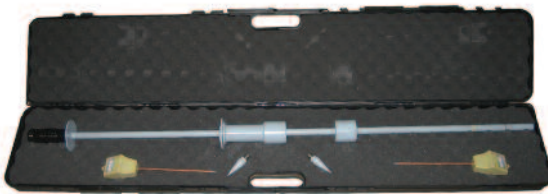
- All welded steel design
- Lightweight at less than 20 lbs. total weight
- Designed for one man operation
- Prevents pavement cracking
- Eliminates bar bending caused by other removal methods
- Adjustable to bar/pin diameters of 1/2" - 1 1/4"
- Pull stuck pneumatic tool bits from pavement and concrete
- Works on all ground surfaces during all seasons

Model	Part #
Bar Puller	121276-10

REPLACEMENT PARTS

Ref	Description	Part #
A	Hook	123001-10
B	Hook/Jaw/Rocker Pin with Snap Ring	123006-10
C	Rocker	123003-10
D	Ratchet Jaw	123002-10
E	Lever	123004-10
F	Ash Wood Handle (6')	123005-10





DCP

- Verify compaction at any lift level during backfill.
- Reduce or eliminate costly tests by soil laboratories.
- Satisfy city and county requirements.

ACCESSORIES

- Recording DCP electronics package (RDCP):
 - Records data digitally about the exercised blows.
 - Sends data wireless to a PDA.
 - Keeps track and protocols all your verifications on various jobs.

KEYHOLE APPLICATIONS

- DCP Extension Rods.

Model	Part #
DCP Kit (includes case and moisture meter)	113611-10
RDCP Electronics Package	Please Call
DCP Extension Rod	Please Call
Moisture Meter	119186-10
Spare Tips	113612-10



PROBE BARS

- Sizes 3' – 8' lengths.
- Heat treated hexagon steel shank.
- Offered in different materials and sizes.
- Fishtail probe bar available.

Model	Length	Part #
Tee Handle Probe Bar	3'	Please Call
Single Point Probe Bar	3'	Please Call

DIGGING BARS

- Sizes 2' – 8' lengths.
- Steel shank with hard faced edge for better wear.
- Top of digging bar can be used to tamp the ground.

Model	Length	Part #
Digging Bar	2'	Please Call
	6'	Please Call
	8'	Please Call

STATIKIL PE
GROUNDING ROD
LLFA TAPE PIPE REPAIR SYSTEM
CADWELD
BONDING CABLES
SOAP CANS
SCOTCHRAP PIPE WRAP
SCOTCHKOTE PRIMER
CUT/GOUGE DEPTH GAUGE
LINK SEALS PENETRATION SEALS
CASING ISOLATORS
END SEALS
WARNING TAPE



Excellent visibility on all PE pipes



- Effectively eliminates static charges on PE gas pipe by increasing surface conductivity
- Eliminates need for bulky burlap or pipe wraps
- Keeps work area clear and eliminates trip hazards posed by other grounded pipe "wraps"
- To be used prior to construction operations including squeeze-off, repair, tapping, cutting, venting, etc.
- Colorant added for positive verification of product coverage
- Remains effective even after pipe is dry
- No aerosols. No wasted over spray.

Specifications

Composition	High Molecular Weight Topical Anti-stat
Physical Form	Liquid
Color	Gray Pigment for Visibility
Flash Point	None
Freeze Point	-10° F
Explosion Hazard	None
Specific Gravity	1.0
Odor	Mild Lemon
pH Regular	7.71
Static Decay Rate	MIL-B-81705-B At Relative Humidity @13% 72°F .35 Sec @5 KV

Product available ready for use in:

- 32 oz spray bottle with simple trigger spray for accurate application.
- 1 Gallon containers

STATIKIL PE has been tested by independent laboratories and meets or exceeds ASTM D-257-80, MIL B-81705-B, Electronic Industry IS-5 and NFPA-99 specifications for surface resistivity and static decay.

Health 0	Flammability 0
Reactivity 0	



PLEASE VISIT WWW.STATIKILPE.COM TO SEE A VIDEO OF STATIKIL PE IN ACTION!

REED STATIC ELECTRIC SAFETY

- Alarm warns of static build-up.
- Features test circuit and low battery warning.
- Plastic case included.

Model	Description	Part #
STDA1	Static Discharge Alarm	Please Call



Call now to place an order
973-335-4800

MULCARE



LLFA® TAPE

LLFA Tape is a self-fusing silicone based tape designed to seal leaks in harsh weather conditions and is currently used as a temporary or permanent repair for natural gas leaks.

- LIVE leak sealing <150psi on PE, Steel, Copper, Cast Iron, SST, etc.
- One-step, straightforward application with minimal prep time
- Stable from -130°F to 500°F (-90°C to 260°C)
- Highly UV & Ozone resistant
- No storage requirements, 4 year shelf life

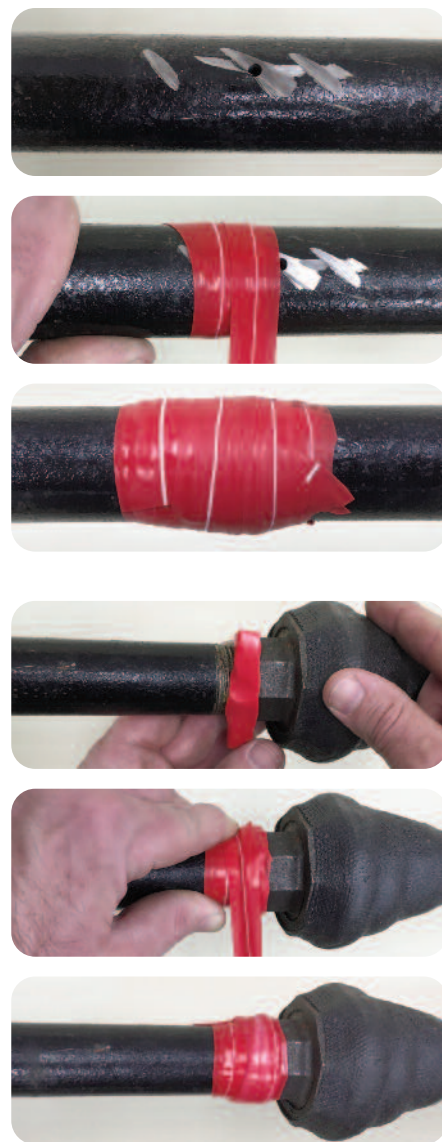
LLFA® SMOOTH

Fast-acting insulating putty that stays flexible and works well in conjunction with LLFA Tape.

- Fill rough and/or uneven surfaces before using LLFA Tape
- Molds quickly and easily, without the use of gloves or chemicals.

FIBER ARMOUR

Moisture cure polyurethane infused fiberglass tape for extra protection of LLFA Tape in extremely aggressive/abusive environments.



Model	Description	Part #
LLFA Tape	1" x 40mil x 36ft (Red)	123643-10
	1" x 40mil x 36ft (Black)	123644-10
	2" x 40mil x 36ft (Red)	123645-10
	1" x 40mil x 12ft (Red)	123643-20
LLFA Smooth	4oz, 113g	123647-10
LLFA Smooth Thin	3oz, 100g	123648-10
LLFA Smooth Brick	4"X 6"	123649-10
Fiber Armour	2" x 5'	123650-10
	3" x 5'	123651-10
	3" x 12'	123651-20
	4" x 15'	123652-10





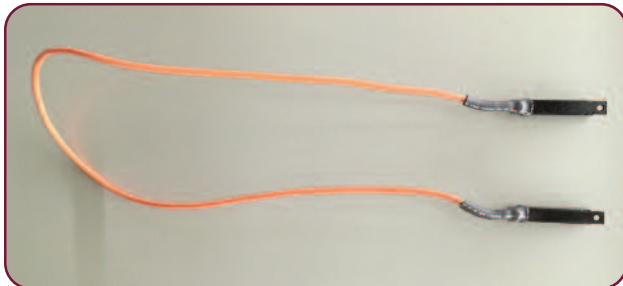
CADWELD® ADAPTERS & ACCESSORIES

- Install exothermically welded connections.
- Options available for keyhole applications

Cadweld® Igniter Adapter	Part #
Igniter with 6' cord	121923-20
Igniter with 15' cord	121923-10

Cadweld® Mold Adapter	Part #
Steel Pipe Mold 3/4" - 3 1/2" diameter pipe	121920-10
Steel Pipe Mold 4" and larger diameter pipe	121919-10

Cadweld® Accessories	Part #
20 Pack Charges CA15PLUS33	117747-10
Mold Cleaner Brush	121994-10
Mold Cleaner Scraper	119415-10
Charges for other material available	Please Call
Pipe Clamp	121921-10



BONDING CABLES

Maintain continuity between two pipe sections when welding to ensure both have adequate path to ground for safe and effective welds.

Lengths Available	Part #
6' Bonding Cable Assembly	121822-10
10' Bonding Cable Assembly	121822-20
12' Bonding Cable Assembly	121822-40
20' Bonding Cable Assembly	121822-30



SOAP CANS

- Metal construction with built in brush.
- Multiple sizes available.

Please contact us for help in ordering.



3M SCOTCHRAP

- PVC tape with a high-tack adhesive provides a corrosion- and impact-resistant seal for all-weather protection of metal piping systems above and below ground.

Model	Size	Part #
3M Scotchrap 50	10 mil, 1" x 100'	100663-10
	10 mil, 2" x 100'	100663-20
	10 mil, 4" x 100'	100663-30



3M SCOTCHRAP PIPE PRIMER

- A quick-drying, non-sag rubber base primer that permeates metal surface pits and irregularities, preparing the surface for tape application

Model	Size	Part #
Scotchrap Pipe Primer	1 gallon can	100664-10



DIGITAL PIT/SCRATCH DEPTH GAUGE

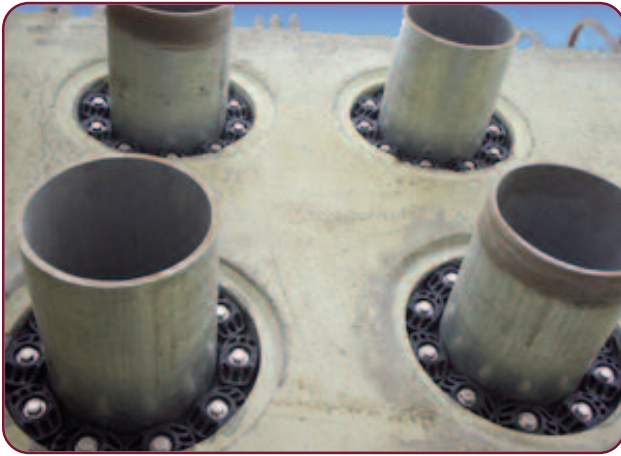
Range: 0 - 1.25" (0-30mm)

Resolution: 0.001 (0.025mm)

Accuracy: ± 0.001 " (0.025mm)

Model	Size	Part #
DPG-3	2-3/8" & 4-7/8" Bases Included	123126-10
DPG-3	Certification	123127-10

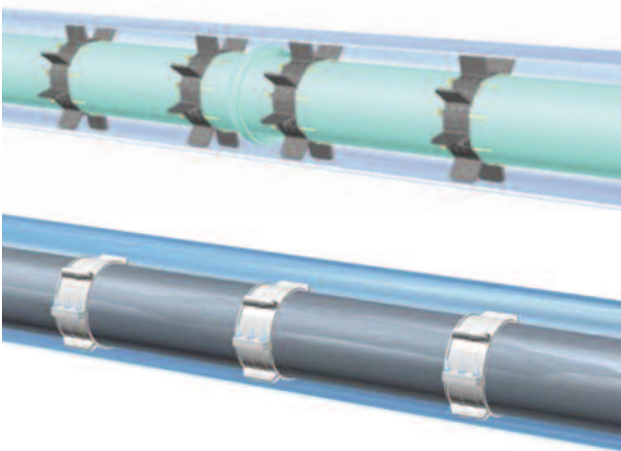




LINK SEALS

- Modular seals are used for permanently sealing pipes of any size passing through walls, floors and ceilings.
- Ductile iron, concrete, metal as well as plastic pipes may be hydrostatically sealed within walls to hold up to 20 psig (40 feet of static head).
- Seals are available for a wide variety of special applications, temperature extremes, exotic chemical combinations and for "out-of-round" or non-centered applications.

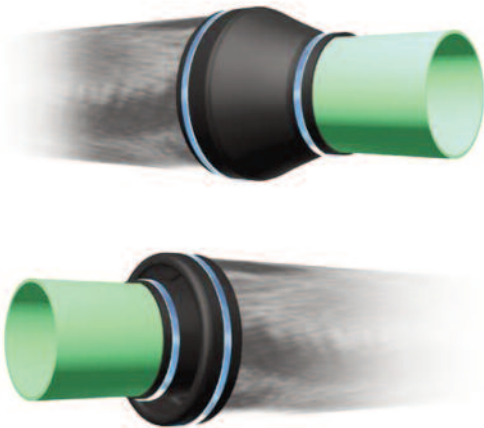
Please contact us for help in ordering the correct size for your application.



CASING ISOLATORS

- The Ranger II® is an entirely non-metallic casing isolator/spacer system that uses molded segments to encircle the carrier pipe.
- Model PE is a high density (linear), injection molded, virgin polyethylene casing isolator/spacer for a wide variety of double containment carrier/casing pipe applications.

Please contact us for help in ordering the correct size for your application.



MODEL "C" END SEALS

- Model "C" custom pull-on end seals are made to customer supplied specifications so they may be used for any size casing/carrier differential.

MODEL "S" STANDARD PULL-ON END SEALS

- Model "S" standard pull-on end seals are flexible and easily installed on nominal steel & IPS casing/carrier pipe combinations.

Please contact us for help in ordering the correct size for your application.



EMPIRE LEVEL NON-DETECTABLE WARNING TAPE

- Durable, dependable non-detectable polyethylene warning tape for service and other non-critical metallic installations.
- Installed at proper shallow depth, ShieldTec is tough, basic protection for any type of buried cable or pipe. Suitable for open trench installation.

Model	Size	Part #
Yellow with Black Type Caution Tape	3" x 1000'	100338-10
	6" x 1000'	100339-10



EMPIRE LEVEL REINFORCED NON-DETECTABLE WARNING TAPE: DURATEC®

- Premier non-detectable **woven** polyethylene tape.
- Patented reinforcing weave provides the strength needed for plowed-in installations.
- Will not stretch when dug into; the printed message stays intact and is easy to read.

Model	Size	Part #
Yellow with Black Type Caution Tape	3" x 1000'	114411-10



EMPIRE LEVEL PREMIUM DETECTABLE WARNING TAPE

- The premium detectable tape used for location and early warning protection for underground lines.
- Middle foil layer allows for both inductive and conductive locating.

Model	Size	Part #
Yellow/Silver, Black Type Caution Tape	2" x 1000'	100341-10
	3" x 1000'	115357-10
	6" x 1000'	115355-10



**MULCARE**

Corporate Office
9 Mars Court, Unit 3
Boonton Twp, NJ 07005
t: 973-335-4800
f: 973-402-1558
info@mulcare.com
www.mulcare.com

Mulcare Pipeline Solutions. Since 1923, Mulcare has grown with the natural gas industry by delivering cutting edge equipment and services that consistently surpass expectations. We are focused and well-versed on the modern concerns of transmission and distribution companies, municipalities and contractors alike. Whether you require the industry's latest and most advanced products, on-site experts, money-saving solutions or all of the above, Mulcare can meet your needs.

Our Objective. We are committed to creating rewarding partnerships with our customers and principal suppliers. These relationships have yielded the industry's leading offering of products, equipment, tools and expertise: all the things necessary to compete in today's dynamic natural gas industry. We can lower your costs and design solutions for the installation, operation and maintenance of natural gas infrastructure.

Our Strengths. Industry experts focused in these areas:

- Commercial, Industrial & Residential Metering
- Commercial/Residential AMI/AMR
- Flow Control & Relief Valves
- Pressure Reducing & Back Pressure Regulators
- Dry & Coalescing Filters
- Anti-Static Protection
- Electronic Pressure, Temperature & Flow Correction
- Pipeline Heaters & Instrument Heaters
- Odorant Injection, Detection & Analyzer Equipment
- Polyethylene Pipe, Valves, Valve Boxes & Fittings
- Conventional Heat Fusion & Electrofusion
- Plastic & Steel Pipe Tools
- Underground Marking & Locating Systems
- Installation, Start-up, Maintenance & Training Programs

Contact us today. Let us demonstrate how 95 years of experience can help you meet your challenges head-on and reach your long-term goals: on time, on budget and ahead of the curve.



*Innovative Products & Services
for Today's Natural Gas Industry*